



31st ANNUAL
BULL SALE

FRIDAY | FEBRUARY 27, 2026 | 1:00 PM

MAXWELL SALES FACILITY - Viking, AB

MAXWELL SIMMENTALS - RANCIER FARMS

31st Annual Bull Sale

FRIDAY, February 27, 2026, Maxwell Sales Facility - Viking, Alberta

Welcome to the 31st annual sale. On behalf of the Maxwell and Rancier Families we would like to thank you for the interest in our programs and for taking your time to go through the catalog. As we get part way through calving, we recognize the dedication and hard work that has brought us to where we are today. It is very gratifying for our families to look back over the last thirty years at the number of bulls we have sold and most importantly the relationships we have cultivated with you the buyer. We would like to thank our past buyers with some having purchased bulls at almost all thirty sales and look forward to working with new. I like to believe it is a testament to the continued trust in our programs as we continue to work with many of the same families that supported us back in the early 90's at the Lloydminster Bull Sale and the Camrose ASA sale. We cherish these enduring partnerships and are eager to forge new ones.

It is also important to acknowledge the next generation of both families, who have stepped up with enthusiasm and a fresh perspective. Their involvement ensures that our legacy will continue to thrive, built on the foundations laid by those who came before them. We can't thank them enough for lessening the workload, being a part of the decision making, and look forward to their future. The Rancier name is a household name in the beef business across the world. From starting out with a small herd of cows, growing to the numbers they have today, their ability to expand while going above and beyond in quality truly exemplifies this family's commitment and passion for the industry. The RF prefix will show up in sale catalogs time and time again and is a herd built on great cow families. Just like their cattle they are equally as good of people and have been a pleasure to work with.

This sale will offer you red, black, and fullblood Simmental bulls, both calving ease and performance along with the percentage Sim-Angus cross and purebred Black Angus bulls there are two breeds available that compliment each other so well. We rely heavily on AI and ET to produce cattle that are functional and built for their environment. ET has allowed us genetics from the most superior cows in the breed fast forwarding the quality. We also do not take buying herd sires lightly. We both strive to get the best ones available to walk in our pastures.

The bulls are developed on a high roughage TMR ration and kept in large pens to allow them to get out and move around. The fact that over 85% of our customers are repeat buyers speaks loudly to the feeding programs these bulls are on. Attention to detail in feeding and management is very important to us. Both herds are frequently visited by experienced feed consultants. We guarantee you a bull that is structurally sound and has passed a semen test done by a licensed veterinarian.

We are very grateful of the support we have had over the past years from our customers. It is always exciting to tour new and old customers through the bull pens. One of the great parts of this business is the people we get to meet. Some have become long-time friends; you know that when a 5 minute phone call turns into an hour.

If you need any assistance in selecting your bulls, give any one of us a call, or better yet, stop by our farms before the sale. We are only a few miles apart. We also have a very competent sales staff that know our programs and will confidently handle your purchases. If you are not 100% satisfied, please let us know and it will be looked after immediately.

We invite you to Maxwell Sales Facility, Viking for February 27 and look forward to seeing you sale day.

Rancier and Maxwell Families



Garth, Angela, Kade & Abby Rancier
(780) 385-2425
Garth's Cell: (780) 385-5313
garth@rancierfarms.com
www.rancierfarms.com



Glen & Leigh Maxwell: (780) 336-2030
Glen's Cell: (780) 385-5552
Bryce's Cell: (639) 998-5053
Kevin & Pru Maxwell: (780) 336-2146
Kevin's Cell: (780) 385-5625
Reece's Cell: (780) 385-5394
gnlmaxwell@gmail.com
www.maxwellsimmentals.com

MAXWELL SIMMENTALS - RANCIER FARMS

31st Annual Bull Sale

FRIDAY, February 27, 2026 | 1:00 PM | Viking, Alberta

Maxwell Sales Facility

Sale Day Phones

Glen Maxwell cell:(780) 385-5552
Kevin Maxwell cell:(780) 385-5625
Garth Rancier cell:(780) 385-5313

Auctioneer:

Ryan Dorran.....(403) 507-6483

Ringmen:

Mark Stock.....(306) 678-4811
Taylor Richards.....(Bohrson Marketing)(306) 821-4169
Craig Flewelling.....(403) 556-0515

Bohrson Marketing Services

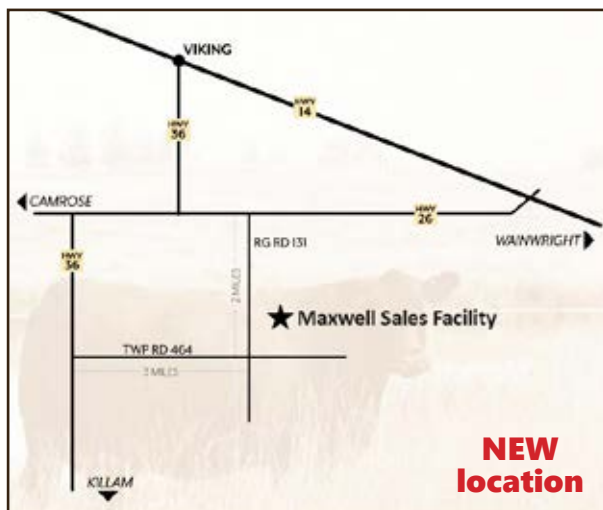
Scott Bohrson.....(403) 370-3010
Rob Voice(306) 270-6082
Taylor Richards.....(306) 821-4169
Darryl Snider.....(780) 385-5561
Cody Haney.....(403) 845-8806
Billy Elmhirst(705) 761-0896

Peterosa Exports

Roger Peters.....(403) 828-9815

Online Bidding

DLMS
Mark Shologan(780) 699-5082



FROM VIKING: Go 5 miles south on HWY 36 then 3/4 of a mile east on HWY 26 to range road 131. Then south 1 3/4 miles on the east side of the road. (first place on the left)

FROM WAINWRIGHT: Go west on HWY 14 through Kinsella. Turn left on HWY 26 to Camrose for 7 miles to range road 131. Then south 1 3/4 miles on the east side of the road. (first place on the left)

DELIVERY:

\$250 off per lot if picked up sale day. Bulls will be kept free of charge for a reasonable length of time, usually until you need them. In rare cases and for convenience reasons, you may be asked to receive your bull(s) when delivering other bulls to your area. All bulls must be insured if going back to the seller's farm unless arrangements have been made between the buyer and seller. Insurance will be available on sale day.

VOLUME DISCOUNTS:

Because of the quality and consistency of bulls offered, they will sell in everyone's budget. It is very likely you will be able to buy all of your bulls here. Those of you who purchase three or more bulls at this sale there will be a 5% discount applied against your total purchase price.

HEALTH OF BULLS:

The two breeders guarantee to sell you a bull that is structurally sound and has passed a semen test done by a licensed veterinarian. Both herds are on a very rigid health program.

SIGHT UNSEEN PURCHASING:

Every year more and more bulls are purchased sight unseen because of the increasing number of repeat buyers. Contact the seller of the bull(s) of your choice, they will discuss the bulls with you and then forward you on to one of our very knowledgeable sales staff members. Then you, the buyer can get your business done in very confidential and professional manner.

TERMS & CONDITIONS:

These bulls sell under the standard terms and conditions set forth by the Canadian Simmental Association.

SEMEN RESERVE:

The two breeders reserve the right to collect semen for in herd use only on any bull in our sale. Semen would be collected at the seller's expense and buyers' convenience.

INSURANCE:

Insurance representatives will be present on sale day. We strongly encourage you to insure your bull purchases.

ONLINE VIEWING & BIDDING

View CATALOGUE Online At:

www.cattlepics.com

www.bohrson.com

View VIDEOS Online At:

www.dlms.ca

www.maxwellsimmentals.com

www.rancierfarms.com

Barn: (780) 336-2243
 Box 188, Viking, Alberta
 T0B 4N0
 gnlmaxwell@gmail.com
 www.maxwellsimmentals.com



Check our website and Facebook page for updated information.

Find us on Google maps.

DIRECTIONS: 45 miles east of Camrose on HWY 26 crossing HWY 36 to Range Road #130 sign at corner turn south 4 miles then east ¼ mile. We look forward to visitors.

Glen & Leigh Maxwell

Ph: (780) 336-2030

Cell: (780) 385-5552

Bryce Maxwell

Cell: (639) 998-5053

Kevin & Pru Maxwell

Ph: (780) 336-2146

Cell: (780) 385-5625

Reece & Dallas Maxwell

Cell: (780) 385-5394

1	NUG GRAPHIC 34N	BW	Sep5	Jan2	365Adj	CE	BW	WW	YW	MILK	MCE	MWWT
	HOMO POLLED FB NUG 34N • PTG1516418 • JAN.10.2025	90	918	1325	1345	7.7	2.6	84.3	119.5	23	6.3	65.2



Sage 506C - dam of lots 1-3



Rancher- sire of lots 1-5



Here is a trio of flush brothers from the breed legend herself, Sage 506C. We sold a full brother to this guy a couple years ago to Lewis Farms that lead off our bull sale and his calves in the pen are sure impressive. 34N is as soft made and sound as we can make them. He is low set and hairy with awesome character and presence. 67N is the cherry red option that has that extra style and attractiveness about him. 86N is super stout and hairy, he's long and super nice headed and masculine. We do have 2 full sisters to these 3, one of them is a 3 year old that we wish we had 100 of. Udder quality is extremely high and she is so easy doing. The other is a heifer calf that looks like she is going to turn into a replica of her older sister. Consistency is important and we thin these 3 really offer that and being backed by the great 506C cow never seems to hurt.

2 **NUG TUNDRA 67N**
HOMO POLLED FB
NUG 67N • PTG1516420 • JAN.16.2025

BW	Sep5	Jan2	365Adj	CE	BW	WW	YW	MILK	MCE	MWWT
93	938	1345	1381	7.7	2.8	86.3	123.5	23.0	6.3	66.2

3 **NUG HURRICAIN 86N**
HOMO POLLED FB
NUG 86N • PTG1516423 • JAN.20.2025

BW	Sep5	Jan2	365Adj	CE	BW	WW	YW	MILK	MCE	MWWT
86	842	1220	1270	7.7	3.0	88.4	126.4	23.0	6.3	67.2

SVS TYCOON 841F
S: SVS RANCHER 42H
HLTS SAMMIE

R PLUS RELOAD 2006Z
D: WFL RED SAGE 506C
WFL RED SAGE 1003Y

SVS BROOKS 669D
SVS RED ANNIE 411B
WS BEEF KING W107
BRANT DONT YA LOVE ME
R PLUS HARD ROCK 145X
IPU RED BARONESS 1T
R PLUS REDGE 8018U
3D MISS SAGE 140 W

4**NUG TARTAN 84N**

HOMO POLLED FB

NUG 84N • PG1514315 • JAN.19.2025

BW	Sep5	Jan2	365 Adj
89	930	1390	1460

CE	BW	WW	YW	MILK	MCE	MWWT
8.7	3.5	93.8	137.1	20.9	5.7	67.8



SVS TYCOON 841F
S: SVS RANCHER 42H
 HLTS SAMMIE

NUG LANDMARK 310G
D: DEEG/SVS/CD SAGE 178J
 WFL RED SAGE 506C

SVS BROOKS 669D
 SVS RED ANNIE 411B
 WS BEEF KING W107
 BRANT DONT YA LOVE ME
 WS BEEF KING W107
 MISS CAMDEN 53E
 R PLUS RELOAD 2006Z
 WFL RED SAGE 1003Y



Sage 178J - dam of lot 4

This would be a personal favorite in the pen, and has been pretty much since the day he was born. He is so complete, deep bodied, sound made, nice headed, moderate framed and the best part of him would be his mother. 178J is a stunning cow. She is so broody and powerful, big middled and stout yet so elegant and attractive. She is a direct daughter of Sage 506C and Landmark who are both known for the high quality females they leave. Cross that with Rancher and you add Tycoon and Sammie. It would be hard to find this high quality of a pedigree in such a complete and impressive package. 84N is a bull that we plan to utilize in our program and he is one we think very highly of.

5**NUG MR 41N**

HOMO POLLED FB

NUG 41N • PG1513931 • JAN.12.2025

BW	Sep5	Jan2	365 Adj
85	898	1315	1343

CE	BW	WW	YW	MILK	MCE	MWWT
11.2	1.5	75.3	114.1	27.5	6.8	65.2



SVS TYCOON 841F
S: SVS RANCHER 42H
 HLTS SAMMIE

SVS BROOKS 669D
 SVS RED ANNIE 411B
 WS BEEF KING W107
 BRANT DONT YA LOVE ME

KWA LAW MAKER 59C
D: NUG SCARLETT 33H
 SPRINGCREEK BROOKE 68Z

CDI AUTHORITY 77X
 KWA MS ROCK 14X
 KOP CROSBY 137W
 SPRINGCREEK BROOKE 11W



Brooke 68Z - grand dam of lot 5-7

This is a really intriguing bull. He is out of a beautiful Lawmaker daughter that comes from the great Brooke 68Z cow. His sire being SVS Rancher who is making his mark on the Simmental breed and being a son of the Sammie cow. This is about as maternally bred as you can make one, 41N ties the Brooke and Sammie cow families together who have both been known for leaving beautiful females. This guy is stout made and attractive with loads of hair. He has a really nice, balanced set of EPD's and impressive performance numbers.

6

NUG HIGHLINE 28N

HOMO POLLED PB
NUG 28N • PTG1516180 • JAN.9.2025

BW	Sep5	Jan2	365 Adj
95	1028	1435	1463

CE	BW	WW	YW	MILK	MCE	MWWT
6.5	4.1	86.4	125.7	26.5	6.0	69.7



SVS RANCHER 42H
S: NUG EXCEL 44L
 WFL RED SAGE 506C

NUG LANDMARK 310G
D: NUG BROOKE 87K
 SPRINGCREEK BROOKE 68Z

SVS TYCOON 841F
 HLTS SAMMIE
 R PLUS RELOAD 2006Z
 WFL RED SAGE 1003Y
 WS BEEF KING W107
 MISS CAMDEN 53E
 KOP CROSBY 137W
 SPRINGCREEK BROOKE 11W



NUG 112K - full sib to dam of lot 6

Here is a really cool breeding piece. Analyze his picture, you have to appreciate his herd bull character, depth of body, length and structural soundness. He has a full sister in in the replacement pen that is extreme high quality. His mother is a beautiful Landmark x Brook cow that we flushed as a 2 year old. She has an awesome udder, good feet and a proven yet outcross pedigree. Cross her with Excel who combines Sammie, Sage and Tycoon and you have a highly maternal, predictable pedigree. We try to stack as may great cows in a pedigree as possible and some of the breed greats are front and center in this one.

7

NUG MAX 95N

HOMO POLLED PB
NUG 95N • PG1516062 • JAN.22.2025

BW	Sep5	Jan2	365 Adj
109	1007	1450	1507

CE	BW	WW	YW	MILK	MCE	MWWT
0.5	5.6	88.7	125.6	28.4	1.2	72.8



SVS RANCHER 42H
S: NUG EXCEL 44L
 WFL RED SAGE 506C

IPU LIEUTENANT 24E
D: NUG LADY MAY 51H
 SPRINGCREEK BROOKE 68Z

SVS TYCOON 841F
 HLTS SAMMIE
 R PLUS RELOAD 2006Z
 WFL RED SAGE 1003Y
 IPU RED DEPUTY 25C
 IPU MS. HORIZON 21A
 KOP CROSBY 137W
 SPRINGCREEK BROOKE 11W



NUG Lady May 51H - dam of lot 7

This Excel sire group is consistently big framed and long bodied with extra thickness and masculinity. 95N is awesome footed just like his mother. 51H is one of the most impressive cows on the farm with a perfect udder, big barrel and capacity with awesome feet and a cool pedigree. This guy combines 3 of the most dominant cow families in the red Simmental breed. Sammie, Sage and Brooke are all known for their daughters and if you analyze this guy I'm sure you can picture what the male calves will look like. A true power bull that is backed by an awesome cow family.

8**NUG MR 106N**

HETERO POLLED PB

NUG 106N • PG1516075 • JAN.24.2025

BW	Sep5	Jan2	365 Adj
109	1024	1405	1448

CE	BW	WW	YW	MILK	MCE	MWWT
1.3	5.9	91.7	127.8	24.7	1.4	70.6



A dark red, heavy haired Excel son that sports the nice blaze face. He is long bodied and thick made with extra performance and power. His mother is a massive bodied, nice uddered, dark red blaze faced Westcott cow that is a favorite of ours. A couple years ago she was exhibited at Vermillion and Minburn summer fairs with her calf. She goes back to Accelerator, he has as big of an impact on our cow herd as any bull we've ever used. These Excel calves have extra power and frame to them and are the kind that will wean off those heavy weight steer calves that bring a premium in the fall.

SVS RANCHER 42H
S: NUG EXCEL 44L
 WFL RED SAGE 506C

WFL WESTCOTT 24C
D: NUG PEARL 103F
 NUG MISS 119X

SVS TYCOON 841F
 HLTS SAMMIE
 R PLUS RELOAD 2006Z
 WFL RED SAGE 1003Y
 TNT 90 PROOF Z401
 WFL SWEET LICIOUS 1044X
 IPU 52N ACCELERATOR 222U
 NUG NECTAR 204M



NUG Excel 44L - sire of lots 6-9

9**NUG RED ROCK 69N**

HOMO POLLED PB

NUG 69N • PG1513970 • JAN.16.2025

BW	Sep5	Jan2	365 Adj
102	1080	1565	1611

CE	BW	WW	YW	MILK	MCE	MWWT
4.1	4.3	90.7	136.0	29.1	4.5	74.5



Here is a real power and performance type bull that has a lot of character and style. He is so long bodied, sound made, dark red and hairy. Check out the weaning and yearling weights out on this guy. This group of Excel sons are consistent in type and kind and I think they will add pounds to their calves and leave daughter that are really special as he combines the great Sammie and Sage cows very close in his pedigree. 69N is out of the same cow family that produced Dunlop and Houston in the past and Powerplay 94N this year.

SVS RANCHER 42H
S: NUG EXCEL 44L
 WFL RED SAGE 506C

KWA RED ROCK 5T
D: BLCC MISS RED ROCK 28C
 KOP MS WALKER 142A

SVS TYCOON 841F
 HLTS SAMMIE
 R PLUS RELOAD 2006Z
 WFL RED SAGE 1003Y
 DAY RED PEPPER DOC 984R
 KWA MS ROCK 7P
 TWIN-CHIEF WALKER 21W
 KOP MS BENGIE 6P



maternal sib to lot 9

10**NUG POWER PLAY 94N**HOMO POLLED PB
NUG 94N • PG1516059 • JAN.22.2025

BW	Sep5	Jan2	365 Adj
96	1006	1425	1472

CE	BW	WW	YW	MILK	MCE	MWWT
5.1	3.5	92.5	134.4	20.6	2.7	66.9

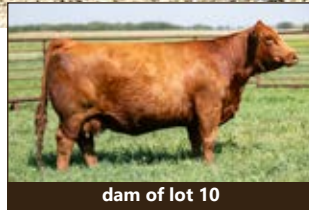


Here is the bull that has had as much buzz and talk as any. He is so complete and attractive with a little extra depth and sogginess to him, dark cherry red and beautiful hair. We campaigned this guy at Immortals in Stettler where he was Champion Simmental bull and Farmfair where he was Reserve Champion Intermediate bull calf. His mother, Rock 130F would be the dam of NUGDunlop that works for Willow Creek and Balisky's, NUG Houston who works for Rocky Meadow Ranch and an awesome heifer calf that Windy Knoll purchased from us at Friday Night Lights last year. His top side is an outcross pedigree and I think this guy is a pretty unique breeding piece.

BEE ALPHA 915J
S: RED TOP 108L
SKORS RED FORTUNE 176Y

WFL MR WESTWAY 7B
D: NUG ROCK 130F
BLCC MISS RED ROCK 28C

PERKS RED WOLF 44G
BEE MS MAXY 915G
SHS ENTICER P1B
SKORS MS FORTUNE 141T
R PLUS RELOAD 2006Z
WFL BLACK NELL 1062X
KWA RED ROCK 5T
KOP MS WALKER 142A



dam of lot 10

**11****NUG KINGDOM 83N**HOMO POLLED PB
NUG 83N • PG1514313 • JAN.19.2025

BW	Sep5	Jan2	365 Adj
88	1045	1505	1550

CE	BW	WW	YW	MILK	MCE	MWWT
8.8	1.8	95.1	138.0	25.8	5.8	73.4



A true sale feature here. Cherry red with that awesome hair coat, super deep and soggy made, long bodied and stout with an outcross pedigree. This is a calf that a lot of people pick out when they tour the pen. His mother is a gorgeous udder Carhartt cow that would also be the grand dam of one of the really good Ease sons in the sale. She would also be a maternal sister to the heifer calf that Siroski Simmentals bought from us at Friday Night Lights in December. He was over 1000 at weaning and over 1500 at a year, he has an awesome EPD profile and he's backed by an awesome cow. This guy checks a lot of boxes.

BEE ALPHA 915J
S: RED TOP 108L
SKORS RED FORTUNE 176Y

NUG CARHARTT 211F
D: WLB 211F CARLY 539H
WLB 42Z GAILYN 364E

PERKS RED WOLF 44G
BEE MS MAXY 915G
SHS ENTICER P1B
SKORS MS FORTUNE 141T
MRL RED WHISKEY 101B
SPRINGCREEK B GOLD 18X
ERIXON GAME ON 42Z
NUG MOLLY 86Y



NUG 228N - maternal sib to dam of lot 11

12**NUG MR 101N**

HOMO POLLED PB

NUG 101N • PRS1540744 • JAN.24.2025

BW	Sep5	Jan2	365 Adj
99	875	1295	1365

CE	BW	WW	YW	MILK	MCE	MWWT



Another really good bull off of the 108L sire that added depth and style to his calves with a calving ease bonus. This guy has an attractive red blaze face, he's smooth made with ample thickness and length. This is a bull that doesn't have papers but that doesn't take away from his quality as an individual. His mother is a really nice young red cow that is sired by Revolt and would stem from the same cow family that has the unregistered Ruger bull in the sale. This guy should calve awesome on young cows or take some birthweight out of some big power cows.

BEE ALPHA 915J
S: RED TOP 108L
 SKORS RED FORTUNE 176Y

PERKS RED WOLF 44G
 BEE MS MAXY 915G
 SHS ENTICER P1B
 SKORS MS FORTUNE 141T

D: FNF-SMSM SIMMENTAL/SIMMENTAL**13****NUG TANGO 40N**

HETERO POLLED PB

NUG 40N • PG1513923 • JAN.12.2025

BW	Sep5	Jan2	365 Adj
85	946	1440	1520

CE	BW	WW	YW	MILK	MCE	MWWT
6.3	3.3	97.5	147.9	24.4	3.8	73.2



Here's another really solid 108L son. This one coming to you with some white on his face. 40N is a lower birthweight, moderate boned bull that would work on a group of young cows. His mother is a really nice 56U daughter that is out of the 417B cow that was flushed many times in her life. We have 6 full sisters to 65K at home and they are



NUG 65K- dam of lot 13

a really nice group, they all have awesome feet with nice udders and they are the easy doing, fault free kind that we all like to have.

BEE ALPHA 915J
S: RED TOP 108L
 SKORS RED FORTUNE 176Y

PERKS RED WOLF 44G
 BEE MS MAXY 915G
 SHS ENTICER P1B
 SKORS MS FORTUNE 141T

SPRINGCREEK LINER 56U
D: NUG KELLY 65K
 NUG FANCY 417B

RCC/TCF LINE DRIVE M181
 NEVAS L93
 SVS CAPTAIN MORGAN 11Z
 NUG TERRA 1Z

14**NUG MR 50N**

HOMO POLLED PB

NUG 50N • PG1513943 • JAN.14.2025

BW	Sep5	Jan2	365 Adj
91	906	1345	1419

CE	BW	WW	YW	MILK	MCE	MWWT
10.4	2.2	83.7	133.3	20.2	9.8	62.1



A bigger framed, stretchy red Walter son that is as sound and correct as any. His mother came to us in a package of full sister bred heifers that we purchased from Skors a few years ago. She has that ideal udder that 4W has been known for, added frame and great big feet under her. The Walter daughters are awesome, they are easy doing and attractive with incredible



Walter- sire of lot 14

udder quality. 50N has a really nice set of EPD's and is a bull that would work in a group of second calvers. He is a bull that should calve easy and one that you would want to keep every daughter from.

MRL BENDER 25F
S: MRL WALTER 47H
 FLYF PEGS POCAHONTAS 720E

HART STATE OF WAR 056C
 MRL MISS 6823D
 MRL MWC 41B
 IPU MS. CROSBY 120Y

SKORS BLACK ENTICER 4W
D: ETZ SKORS DREAM GAL 4K
 SKORS DREAM GAL 24X

SHS ENTICER P1B
 SKORS MISS JOKER 10N
 CNS DREAM ON L186
 SKORS RED GUNS 1U

15**NUG MR 59N**

HOMO POLLED PB

NUG 59N • PG1513958 • JAN.14.2025

BW	Sep5	Jan2	365 Adj
100	1016	1415	1435

CE	BW	WW	YW	MILK	MCE	MWWT
4.7	4.2	82.0	119.9	16.8	3.5	57.8



Another big framed, powerful, dark red Ruger son that will be easy to find sale day. He is super long bodied and wide topped with a nice hair coat and big dark red feet. Another bull that weaned off over 1000lbs and hasn't slowed down since. His grand dam on the cow side was one of our favorites for many years and was a daughter of IPU Accelerator that left his mark on or herd. With calf prices the way they are, it doesn't hurt to run a bull that will add frame and pounds in the fall without giving up the maternal end of things.

DOUBLE BAR D RED WAVE 2005H
S: DOUBLE BAR D RUGER 581K
 COME AS U R SCREAM 44H

W/C BANKROLL 811D
 MAF GOLDIE 140E
 KWA LAW MAKER 59C
 COME AS U R SCREAM 632D

NUG ROYAL RED 324A
D: NUG DELTA 676D
 NUG MISS 119X

LFE BLACK LAKOTA 385W
 TRIPLE C SMARTY PANTS R
 IPU 52N ACCELERATOR 222U
 NUG NECTAR 204M

16**NUG RUGER 6N**

HOMO POLLED PG

NUG 6N • PG1510099 • JAN.2.2025

BW	Sep5	Jan2	365 Adj
94	1105	1560	1536

CE	BW	WW	YW	MILK	MCE	MWWT
7.2	3.3	95.7	138.5	17.8	5.6	65.7



DOUBLE BAR D RED WAVE 2005H
S: DOUBLE BAR D RUGER 581K
 COME AS U R SCREAM 44H

W/C BANKROLL 811D
 MAF GOLDIE 140E
 KWA LAW MAKER 59C
 COME AS U R SCREAM 632D
 TNT BOOTLEGGER Z268
 MRL MISS 677Y
 SPRINGCREEK TEDDY 72U
 SPRINGCREEK RED TARA 90S

MRL RED WHISKEY 101B
D: NUG GOLDIE 31G
 SPRINGCREEK B GOLD 18X



Ruger- sire of lot 15-24



NUG 31G- dam of lot 16

6N has been a favorite of ours since he was about a month old. He is super powerful and impressive to lay eyes on. He's big framed, dark red, super attractive with a lot of herd bull character. To see him alongside his mother in the summer was a sight to see. She brought him home at the end of August at 1105lbs. His mother is among our favorite cows on the farm. She has so much power and performance with an awesome udder and really good feet. 31G is the dam of our leadoff bull from last year that sold to MAVV Farms, another son was a high seller to Rocking Heart Range and another to Prairie Sky Farms. The Ruger sired calves have exceeded our expectations and I think when you see the sire group it will give you confidence in their ability to take a program forward.

17**NUG REVOLVER 36N**

HOMO POLLED PB

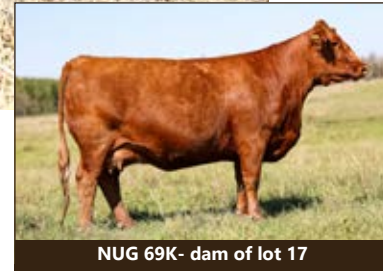
NUG 36N • PG1513911 • JAN.11.2025

BW	Sep5	Jan2	365 Adj
90	912	1400	1479

CE	BW	WW	YW	MILK	MCE	MWWT
7.1	3.1	81.5	126.6	23.9	6.3	64.7



Dark red and good looking with extra length and style. This Ruger son is a pretty cool herd bull in the making. He has so much style, presence and masculinity with a big time dam that entered our donor program last spring. We have 4 full sisters to 69K at home and 3 of the 4 have been successfully flush and the 4th has been talked about every year. The consistency in quality and production record that this guy carries is undeniable.



NUG 69K- dam of lot 17

DOUBLE BAR D RED WAVE 2005H
S: DOUBLE BAR D RUGER 581K
 COME AS U R SCREAM 44H

W/C BANKROLL 811D
 MAF GOLDIE 140E
 KWA LAW MAKER 59C
 COME AS U R SCREAM 632D

NUG LANDMARK 310G
D: NUG BROOKE 69K
 SPRINGCREEK BROOKE 68Z

WS BEEF KING W107
 MISS CAMDEN 53E
 KOP CROSBY 137W
 SPRINGCREEK BROOKE 11W

18**NUG ROYALTY 100N**

HOMO POLLED PB

NUG 100N • PG1516070 • JAN.23.2025

BW	Sep5	Jan2	365 Adj
108	990	1485	1578

CE	BW	WW	YW	MILK	MCE	MWWT
2.4	5.7	98.7	152.3	23.0	4.3	72.4



A super powerful, attractive, high capacity red blaze face bull that is super complete. This is the type of bull that we strive to produce for our customers year after year. His mother is a beautiful, deep bodied, nice uddered Tycoon cow that we purchased out of the Meadow Acres dispersal. She is a cow that grabs every visitor's attention for her overall mass and she always has a big impressive calf by her side. This Ruger sire group will add frame and power without giving up eye appeal and structural soundness. 100N is in the top 2 and 3% in yearling weight and weaning weight respectively. He posted one of the heaviest adjusted yearling weights in the pen with 1578lbs.



Lot 18 and his dam in the summer



MAF 145J- dam of lot 18

DOUBLE BAR D RED WAVE 2005H
S: DOUBLE BAR D RUGER 581K
 COME AS U R SCREAM 44H

W/C BANKROLL 811D
 MAF GOLDIE 140E
 KWA LAW MAKER 59C
 COME AS U R SCREAM 632D

SVS TYCOON 841F
D: MAF ROYALTY 145J
 TRI-R MS ROYALTY 7Y

SVS BROOKS 669D
 SVS RED ANNIE 411B
 MADER P ROYAL ARMS 36W
 TRI-R MS LADY GUNNER 5U

19**NUG REGIMENT 93N**HOMO POLLED PB
NUG 93N • PRS1540730 • JAN.22.2025

BW	Sep5	Jan2	365 Adj
96	1010	1470	1540

CE	BW	WW	YW	MILK	MCE	MWWT



A big stretchy Ruger son that is long and deep with a little extra power. This guy has a lot of herd bull character and is backed by a beautiful cow that unfortunately isn't registered. She has an awesome udder and is extremely powerful and attractive. 93N is a bull that will sire those extra heavy steer calves at weaning and leave you a crop of heifer calves that you'll love.

DOUBLE BAR D RED WAVE 2005H W/C BANKROLL 811D
S: DOUBLE BAR D RUGER 581K MAF GOLDIE 140E
 COME AS U R SCREAM 44H KWA LAW MAKER 59C
 COME AS U R SCREAM 632D

D: FNF-SMSM SIMMENTAL/SIMMENTAL**20****NUG CHINOOK 126N**HETRO POLLED PB
NUG 126N • PG1516147 • FEB.5.2025

BW	Sep5	Jan2	365 Adj
94	1004	1450	1560

CE	BW	WW	YW	MILK	MCE	MWWT
5.9	4.6	90.6	129.3	22.9	6.1	68.2



126N is long bodied and big framed with that flashy white face. He is a typical Ruger son who seemed to work on a variety of cows. This guy is out of an awesome fullblood cow that's in the prime of her life. This is a testament to the quality of cattle when you cross really good red and fullblood genetics. 43G is a dark dark red goggle eyed Inscription daughter with a beautiful udder and goes back to a really good Avalanche cow. This guy should add some frame any look to his calves and give you the excitement of some chrome on the calves at calving time.

DOUBLE BAR D RED WAVE 2005H W/C BANKROLL 811D
S: DOUBLE BAR D RUGER 581K MAF GOLDIE 140E
 COME AS U R SCREAM 44H KWA LAW MAKER 59C
 COME AS U R SCREAM 632D
 LFE INSCRIPTION 570E ANCHOR "T" LEGEND 7H
D: NUG BRITNEY 43G SUNNY VALLEY RHEA 54C
 NUG WENDY 665D BAR KR AVALANCHE 52X
 NUG JUDY 26X

21**NUG LIBERTY 132N**

HOMO POLLED PB

NUG 132N • PG1517684 • FEB.7.2025

BW	Sep5	Jan2	365 Adj
93	832	1220	1503

CE	BW	WW	YW	MILK	MCE	MWWT
3.1	4.9	89.5	128.9	15.5	3.0	60.3



maternal sib to dam of lot 21

Another dark red Ruger son that is correct and sound, moderate framed, and deep bodied in an attractive package. His mother is a daughter of the awesome 2X cow who was a beautiful cow and one of our favorites in her time. Precision has left us some awesome cows and 137H is one of them, Ruger is cutting a swath and is building excitement as his first calf crop matures. A fresh and exciting bull here that has proven cow families and bulls behind him.

DOUBLE BAR D RED WAVE 2005H
S: DOUBLE BAR D RUGER 581K
 COME AS U R SCREAM 44H
 W/C BANKROLL 811D
 MAF GOLDIE 140E
 KWA LAW MAKER 59C
 COME AS U R SCREAM 632D

MRL PRECISION 143E
D: NUG JENN 137H
 NUG JENN 2X

MRL CAPONE 130B
 MRL MISS 2435Z
 CNS DREAM ON L186
 NUG DARLENE 880U

22**NUG TACOMA 129N**

HOMO POLLED PB

NUG 129N • PG1517662 • FEB.6.2025

BW	Sep5	Jan2	365 Adj
95	898	1325	1438

CE	BW	WW	YW	MILK	MCE	MWWT
5.8	2.9	79.4	121.8	25.3	4.4	65.0



Brooke 68Z- grand dam of lot 22

One of the longest bodied bulls in the pen this year. 129N is smooth made and nice headed like all of the Ruger calves with a little extra frame and growth. His mother is one of the most beautiful females on the farm with a perfect udder and awesome feet. She is a direct daughter of the Brooke 68Z that has had as much influence in our herd as any cow in recent years. This bull is maternally bred and high quality. Someone told me once if you breed for females the bulls will show up and I think that's the case here.

DOUBLE BAR D RED WAVE 2005H
S: DOUBLE BAR D RUGER 581K
 COME AS U R SCREAM 44H
 W/C BANKROLL 811D
 MAF GOLDIE 140E
 KWA LAW MAKER 59C
 COME AS U R SCREAM 632D

KWA LAW MAKER 59C
D: NUG BRANDY 18H
 SPRINGCREEK BROOKE 68Z

CDI AUTHORITY 77X
 KWA MS ROCK 14X
 KOP CROSBY 137W
 SPRINGCREEK BROOKE 11W

23**NUG SAFARI 145N**

HOMO POLLED PB

NUG 145N • PG1517738 • FEB.17.2025

BW	Sep5	Jan2	365 Adj
92	892	1325	1482

CE	BW	WW	YW	MILK	MCE	MWWT
6.2	4.2	91.4	136.8	22.0	4.7	67.7



NUG 417B- maternal grand dam

A smooth made, dark red, soggy Ruger son that will be just over a year old on sale day. His mother is a really impressive 56U x 417B cow that we're really high on. She is massive and powerful with a ton of hair, awesome feet and a near perfect udder. She just calved here in the middle of January, she is one of those cows that we get excited about when we see she's calving. Ruger, 56U Captain Morgan, and Law Maker. Talk about a maternal pedigree with lots of power.

DOUBLE BAR D RED WAVE 2005H
S: DOUBLE BAR D RUGER 581K
 COME AS U R SCREAM 44H
 W/C BANKROLL 811D
 MAF GOLDIE 140E
 KWA LAW MAKER 59C
 COME AS U R SCREAM 632D

SPRINGCREEK LINER 56U
D: NUG FINE LINE 43H
 NUG FANCY 417B

RCC/TCF LINE DRIVE M181
 NEVAS L93
 SVS CAPTAIN MORGAN 11Z
 NUG TERRA 1Z

24**NUG ONYXE 166N**

HETERO POLLED PB

NUG 166N • PG1518219 • MAR.10.2025

BW Sep5 Jan2 365 Adj

102 888 1320

CE BW WW YW MILK MCE MWWT

3.2 5.3 93.9 137.9 24.0 3.0 71.0



The youngest bull in the pen yet he demonstrates outstanding performance for his age. Just like the other Ruger brothers this guy is packed with hair, muscle, and eye appeal but in a more moderate package. 166N had the highest average daily gain at weaning which comes with no surprise as his dam has been a prolific producer for us. Past sons from the sale reside around Provost at Paul Murray Farms as well as Wayne Trenerry's and two daughters are retained in the herd. If you are looking for a performance bull that will maintain your tan hided cowherd with a strong maternal background this would be a strong option.

DOUBLE BAR D RED WAVE 2005H
S: DOUBLE BAR D RUGER 581K
 COME AS U R SCREAM 44H

W/C BANKROLL 811D
 MAF GOLDIE 140E
 KWA LAW MAKER 59C
 COME AS U R SCREAM 632D

WFL MR WESTWAY 6C
D: MISS CAMDEN 53E
 MISS CAMDEN 90B

TNT 90 PROOF Z401
 WFL SWEET LICIOUS 1044X
 SPRINGCREEK RED TANK 55S
 MISS CAMDEN 42W

25**NUG ELDERADO 138N**

HETERO POLLED PB

NUG 138N • PG1517696 • FEB.9.2025

BW Sep5 Jan2 365 Adj

98 965 1450 1597

CE BW WW YW MILK MCE MWWT

3.6 5.3 92.6 141.5 24.8 2.7 71.1



SVS TYCOON 841F
S: DEEG RECOIL 90K
 DEEG MS SAGE 105G

SVS SCOUT 25X
D: NUG TULA 652D
 NUG TWILL 256T

SVS BROOKS 669D
 SVS RED ANNIE 411B
 SPRINGCREEK LINER 56U
 WFL RED SAGE 506C
 WHEATLAND BULL 738T
 3D MISS RED NOREMAC 494U
 MRL MONTANA 48M
 NUG GALAXY 210M



Sire of lots 25-29

This is a personal favorite in the pen. He is thick, heavy muscled, ideal bone and structure, good footed, masculine and attractive in a dark red hairy package. This guy has as much character and quality as any. His mother is a big, powerful, dark red Scout daughter that has a real nice udder. She would be a half sister to the Matrix bull that walked here for years and if you've followed our program you know how well they were received. This is a really exciting bull that we are very high on and is the type that we strive to produce.

26 **NUG CHIVAS 161N**
 HOMO POLLED PB
 NUG 161N • PG1518204 • MAR.3.2025

BW	Sep5	Jan2	365 Adj
92	858	1300	1527

CE	BW	WW	YW	MILK	MCE	MWWT
6.2	4.5	93.7	134.8	27.7	4.6	74.6



Moderate framed and cool looking with that nice blaze face. He combines the fullblood and red divisions here going back to 85Z and Avalanche. 371J is a moderate framed, nice uddered cow that is really easy to like. Recoil is a bull that we really admire for his thickness, hair and power and is backed by a beautiful cow. She is a 56U x Sage that I loved when I saw her and she has proven to be productive. 161N has lots of power and a nice look to him while sporting an outcross, exciting pedigree.

SVS TYCOON 841F
S: DEEG RECOIL 90K
 DEEG MS SAGE 105G

 BOUNDARY REVOLT 118F
D: NUG JAMIE 371J
 NUG FANTSY 44F

SVS BROOKS 669D
 SVS RED ANNIE 411B
 SPRINGCREEK LINER 56U
 WFL RED SAGE 506C
 LFE RS LEWIS 813Y
 BOUNDARY TUMBLER 107D
 BAR KR AVALANCHE 52X
 NUG MORGAN 85Z

27 **NUG CARONA 151N**
 HOMO POLLED PB
 NUG 151N • PG1517833 • FEB.22.2025

BW	Sep5	Jan2	365 Adj
101	902	1350	1532

CE	BW	WW	YW	MILK	MCE	MWWT
4.1	6.1	99.9	148.5	26.2	2.8	76.2



One of the really good Recoil bulls in the pen with an incredible amount of depth and hair. Just over a year old and gives up nothing to his older pen mates. He is in the top 3% of the breed for both yearling and weaning weight and posted a big adjusted yearling weight of 1532. His mother is a dark red Regulator cow that has a really nice udder and goes back to the 4C cow who would be the mother of Pioneer that sold to Sunny Valley. 168H had a high selling bred this year to KZ Simmentals.

SVS TYCOON 841F
S: DEEG RECOIL 90K
 DEEG MS SAGE 105G

 MRL REGULATOR 148D
D: NUG HERSHEY 168H
 PRO RED HERSHEY 4C

SVS BROOKS 669D
 SVS RED ANNIE 411B
 SPRINGCREEK LINER 56U
 WFL RED SAGE 506C
 MRL CAPONE 130B
 MRL MISS 677Y
 MUIRHEADS LIGHTS OUT 4Y
 TWIN-CHIEF WYNN 889W

28

NUG STOCKMAN 143N
HOMO POLLED PB
NUG 143N • PG1517731 • FEB.15.2025

BW	Sep1	Jan5	365Adj
98	846	1290	1442

CE	BW	WW	YW	MILK	MCE	MWWT
5.5	4.9	87.3	126.4	20.8	5.0	64.5



Another really hairy, dark red bull off of Recoil that lots of guys will find on sale day. He is soft made and really good footed. His mother is a really nice Red whiskey daughter that has a real tidy udder and lots of volume. I would expect 143N to clean up some udders and create females that will be around for a long time. We really like the early maturity and masculinity of these recoil sired bulls and I think you will be impressed by the entire sire group when you see them.

SVS TYCOON 841F
S: DEEG RECOIL 90K
DEEG MS SAGE 105G

SVS BROOKS 669D
SVS RED ANNIE 411B
SPRINGCREEK LINER 56U
WFL RED SAGE 506C

MRL RED WHISKEY 101B
D: NUG MILLA 26G
NUG KAMMILLA 547C

TNT BOOTLEGGER Z268
MRL MISS 677Y
NUG ROYAL RED 324A
NUG MISS 68X

29

NUG REMADA 107N
HETERO POLLED PB
NUG 107N • PG1516076 • JAN.24.2025

BW	Sep1	Jan5	365Adj
94	908	1395	1494

CE	BW	WW	YW	MILK	MCE	MWWT
5.2	4.9	89.9	132.8	25.9	4.8	70.9



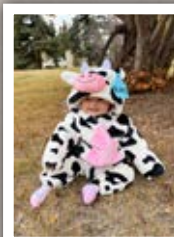
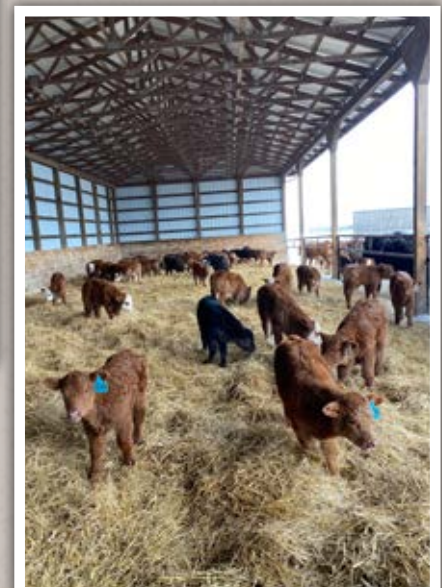
A really hairy, soft made, deep bodied bull that's really complete. He is a typical Recoil calf with his herd bull character, extra masculine and sound made. His mother is a really nice red blaze face cow that is out of a fullblood cow. Lots of cowboys will find this guy on sale day and is a bull that is right for the times. 107N is a bull that should calve really well on mature cows and add extra pounds and style to his calf crop. The way the market is now, why not make your calves as heavy as possible in the fall.

SVS TYCOON 841F
S: DEEG RECOIL 90K
DEEG MS SAGE 105G

SVS BROOKS 669D
SVS RED ANNIE 411B
SPRINGCREEK LINER 56U
WFL RED SAGE 506C

BLACK GOLD CAPTAIN SCREAM 119F
D: NUG MISS SCREAM 368J
NUG MORGAN 85Z

BGS/BM CAPTAIN SCREAM 63D
SPRINGCREEK BROOKE 11W
IPU CLASSIC 1X
NUG STELLA 650S



30**NUG MAXIUM 24N**

HOMO POLLED PB

NUG 24N • PG1510329 • JAN.7.2025

BW	Sep5	Jan2	365 Adj
92	1008	1450	1487

CE	BW	WW	YW	MILK	MCE	MWWT
4.2	5.6	98.5	145.3	23.5	5.5	72.8



This is the lone Landmark son this year. If you have been following our program of the last few years you would have noticed the impact that Landmark and the Landmark daughters have had. 24N has some added frame and length while remaining really attractive, smooth made and complete. This guy will sire incredible females. He combines the maternal greatness of Landmark, Tycoon, Sage 506C and Fancy 417B.

WS BEEF KING W107
S: NUG LANDMARK 310G
 MISS CAMDEN 53E

CINDERELLA MAN
D: NUG FIONA 1K
 NUG FANCY 417B

WS BEEF MAKER R13
 WS MISS DREAMBOAT T17
 WFL MR WESTWAY 6C
 MISS CAMDEN 90B
 SVS TYCOON 841F
 WFL RED SAGE 506C
 SVS CAPTAIN MORGAN 11Z
 NUG TERRA 1Z



NUG 417B - grand dam

31**NUG DUNLOP 51N**

HOMO POLLED PB

NUG 51N • PG1513944 • JAN.14.2025

BW	Sep5	Jan2	365 Adj
92	970	1435	1476

CE	BW	WW	YW	MILK	MCE	MWWT
6.0	4.4	85.4	131.6	22.8	5.4	65.5



The lone Dunlop son in the sale this year and all we can say is that we wish we had more. 51N is super dark red and hairy, he's moderate framed and attractive with adequate length and thickness. Dunlop has done a great job for Willow Creek Simmentals and Balisky Farms. 51N's mother is a powerful red baldy Precision daughter that had our leadoff and high selling bred heifer a couple years ago that was purchased by Robb Farms. She entered their donor pen after she had her first calf and that calf sold to Lewis Farms in Robbs bull sale. This guy has production and predictability bred into him.

NUG LANDMARK 310G
S: NUG DUNLOP 11L
 NUG ROCK 130F

MRL PRECISION 143E
D: NUG FIREFLY 131G
 MECK FIREFLY 76Z

WS BEEF KING W107
 MISS CAMDEN 53E
 WFL MR WESTWAY 7B
 BLCC MISS RED ROCK 28C
 MRL CAPONE 130B
 MRL MISS 2435Z
 LBR CROCKET R81
 MECK JASMINE 816U



NUG Dunlop - sire

32**NUG LOYALTY 20N**HOMO POLLED PB
NUG 20N • PTG1516355 • JAN.6.2025

BW	Sep5	Jan2	365 Adj
93	932	1300	1295

CE	BW	WW	YW	MILK	MCE	MWWT
4.9	3.6	64.9	95.4	20.8	4.2	53.3



20N is as stylish and good looking as any. He is moderate sound structured, framed and stout made with lots of hair and that awesome dark cherry red color. This is a pretty exciting genetic makeup. Combining the legendary Sage 506C cow and Loyalty is as predictable as they come. The daughters from this guy should be moderate framed, easy doing cows that will have beautiful udders and good feet. 20N is the early maturing type that looked like a bull from a young age and should cross great on a variety of cows. No guess work on this guy.

LFE STRATTON 3094F
S: LFE LOYALTY 836H
IPU 10D POCAHONTAS 117F

R PLUS RELOAD 2006Z
D: WFL RED SAGE 506C
WFL RED SAGE 1003Y

LFE TRIUMPH 816A
LFE RS AMBER 2140B
IPU RED DEPUTY 25C
IPU 105L POCAHONTAS 10D
R PLUS HARD ROCK 145X
IPU RED BARONESS 1T
R PLUS REDGE 8018U
3D MISS SAGE 140 W



LFE Loyalty - Sire of lot 32+33



Sage 506C - dam

33**NUG SAERGENT 23N**HOMO POLLED PB
NUG 23N • PTG1516400 • JAN.6.2025

BW	Sep5	Jan2	365 Adj
96	862	1285	1311

CE	BW	WW	YW	MILK	MCE	MWWT
9.3	2.6	68.9	102.4	18.9	4.8	53.4



A super attractive and stylish red blaze bull here that is super correct and unique. 23N has an awesome hair coat and perfect feet under him. We have a full sister to this guy that is among the best in the heifer pen this year. His dam, HLTS Sammie, is a cow that we think very highly of and have has some success with her progeny. We have sold 2 Sammie daughter at Friday Night Lights to Walsh Farms and Duncan Kueber, she is also the dam of Rancher who we have used a lot of and had great success doing so. Loyalty has been known to add presence and style, foot and udder quality and depth of body. A really high quality individual out of one of the best cows you can find.

LFE STRATTON 3094F
S: LFE LOYALTY 836H
IPU 10D POCAHONTAS 117F

WS BEEF KING W107
D: HLTS SAMMIE
BRANT DONT YA LOVE ME

LFE TRIUMPH 816A
LFE RS AMBER 2140B
IPU RED DEPUTY 25C
IPU 105L POCAHONTAS 10D
WS BEEF MAKER R13
WS MISS DREAMBOAT T17
WHEATLAND RED ACE 747T
HPF LOVE ME U045



Sammie - dam of lot 33

34**NUG RED WOOD 14N**HETERO POLLED PB
NUG 14N • PG1513951 • JAN.4.2025

BW	Sep5	Jan2	365 Adj
96	1100	1460	1412

CE	BW	WW	YW	MILK	MCE	MWWT
7.2	3.8	84.3	117.8	19.3	2.1	61.5



14N is a big framed, big middle, stout built, dark red bull that is a true power bull. This guy was a really early maturing calf in the summer and was sure impressive alongside his big broody dam. If you're looking for a bull to add power and performance to the steer calves and leave you a dark red, easy doing group of heifers, this is your guy. He weaned off his mother at an impressive 1100lbs and was 1560lbs at a year of age.

**Redwood- sire**

LFE STRATTON 3094F
S: LFE RED WOOD 840H
IPU 10D POCAHONTAS 117F

LFE TRIUMPH 816A
LFE RS AMBER 2140B
IPU RED DEPUTY 25C
IPU 105L POCAHONTAS 10D

WFL WESTCOTT 24C
D: NUG MISS 36E
SOUTH HOLDEN AHARI 51A

TNT 90 PROOF Z401
WFL SWEET LICIOUS 1044X
WJS LABEL ME TEDDY 129X
SOUTHOLDEN MISSJAHARI

35**JTC 71N**HOMO POLLED PB
JTC 71N • PTUNR1516412 • JAN.17.2025

BW	Sep5	Jan2	365 Adj
94	882	1305	1385

CE	BW	WW	YW	MILK	MCE	MWWT
5.0	4.4	78.7	119.1	23.4	4.7	62.8



HARVIE RED SUMMIT 54B
S: SUN RISE EVEREST 32F
SUN RISE MORGAN 8C

KWA FLYF RED MOUNTAIN 16Z
HARVIE DAKOTA ROSE 11Z
SVS CAPTAIN MORGRAN 11Z
SUN RISE BLACK 51X

NUG LANDMARK 310G
D: NUG BROOK 91K
SPRINGCREEK BROOKE 68Z

WS BEEF KING W107
MISS CAMDEN 53E
KOP CROSBY 137W
SPRINGCREEK BROOK 11W

**91K- dam**

71N is a really stylish bull with added eye appeal, length and thickness. He is sound made and good footed with tons of hair. His mother is a Landmark x Brooke cow that was purchased from us by Duncan Kueber at Friday Night Lights in 2022. She has developed into a beautiful young donor cow that is often admired by visitors to the farm. The Landmark x Brook cross really clicked, we have 4 of these full sisters at home that are all extremely impressive, their two full brothers would be Eclipse that was purchased by Canadian Sires and KT Ranches and NUG Viking that works for Circle G. Everest is a power bull that's cherry red and attractive with a little different twist to his pedigree.

36**NUG SANTOS 165N**HOMO POLLED PB
NUG 165N • PG1518215 • MAR.9.2025

BW	Sep5	Jan2	365 Adj
97	845	1285	

CE	BW	WW	YW	MILK	MCE	MWWT
6.2	4.2	75.5	112.7	23.7	3.9	61.5



An early maturing red bull that weaned an impressive weight for his age and moves flawlessly like his sire. 165N is sired by a bull we call Leader who catches everyone's attention when touring the herdbulls because of his natural fleshing ability and dark red heavy haircoat. We are very impressed by Leader's first set of females that are just beginning to calve and they already look like the type that



Leader - sire

will produce for years to come. Since acquiring the dam to 165N she has produced sons working at Verdant Valley Colony and Karvonen Land & Cattle. Another time tested ranchers bull that will produce the kind of cattle that stick around and work.

SVS TYCOON 841F
S: LRX TYCOON 36K
LRX MS BLACK 155B

SVS BROOKS 669D
SVS RED ANNIE 411B
HARVIE JDF WALLBANGER111X
LRX MS 75X

LFE RED CASINO 3036X
D: RAINALTA FERDINARD 15C
RAINALTA LASS 39R

LFE BS LEWIS 322U
LFE DREAM LADY 112P
LFE RED HEMI 391N
RAINALTA RED LASS 45J

37**NUG SYNERGY 127N**HOMO POLLED PB
NUG 127N • PG1516149 • FEB.5.2025

BW	Sep5	Jan2	365 Adj
93	876	1370	1535

CE	BW	WW	YW	MILK	MCE	MWWT
5.5	3.6	93.7	138.9	23.5	4.2	70.4



Here is a big bodied, thick made, dark red bull out of our calving ease sire, Fleetwood. 127N is soggy and deep bodied with lots of style and presence to him. His mother is a powerful, nice uddered black cow that is easy to like. This is a February born bull that stands right in with his older pen mates without giving up any power. The Fleetwood sired calves sure come easy at birth and really grow. The



Fleetwood - sire of lot 37

bulls have been highlights of the sale the last couple years and the daughters that we have in production are really nice young females. You will see the Fleetwood's influence in our herd for years to come.

CMS SOCHI 307A
S: R PLUS FLEETWOOD 1012J
MISS R PLUS 9495G

DRAKE POKER FACE 2X
YR BLK PRIMADONNA 930W
R PLUS 7141E
MISS R PLUS 4005B

LFE GAME FACE 338F
D: NUG KIMBERLY 106K
NUG PAISLEIGH 52F

LFE CASH 386D
LFE BS AMBER 60D
WFL WESTCOTT 24C
PRO RED HERSHEY 4C

38**NUG MR 87N**HOMO POLLED PB
NUG 87N • PG1516051 • JAN.20.2025

BW	Sep5	Jan2	365 Adj
93	954	1385	1505

CE	BW	WW	YW	MILK	MCE	MWWT
4.5	4.4	91.2	130.7	27.1	3.8	72.7



Here is a really long bodied, smooth made, dark cherry red bull that is easy to find in the pen. Out of a really nice first calf heifer that weaned him off heavy in the fall. He has an outcross pedigree and he combines the power of the fullblood on the bottom of his mother's side and the calving easy and attractiveness of Sleep Easy on the top side. Lots of cow boys will find this guy on sale day.

KUNTZ SHERIFF 8A
S: MRL SLEEP EASY 140D
MRL MISS 836W

KUNTZ MARSHALL 12Y
PEACOCK'S LI'L NETTIE 23Y
MRL BLACK BEAR 79S
MRL MISS 828S

DMJ MR. 15J
D: NUG LYNN 530L
NUG PURDY 102Z

OAKVIEW FINDLAY 36F
DMJ MISS 9D
NUG ALBERT 47L
NUG MISS 838U

39

NUG LATIGO 10N

HOMO POLLED PB

NUG 10N • PG1510119 • JAN.3.2025

BW	Sep5	Jan2	365 Adj
74	982	1395	1447

CE	BW	WW	YW	MILK	MCE	MWWT
16.5	-1.3	90.1	128.1	26.0	10.2	71.1



This guy is a really cool breeding piece. Latigo is a bull that could be considered a heifer bull option but he is so much more than just that. He has a ton of character and presence to him. He is stout and long bodied in an ideal frame, nice big feet under him and sound made. He is in the top 2% of the breed for CE and BW and in the top 10% for WW and YW, he's in the top 25% in 11 of the 13 categories. His actual numbers are equally as impressive with a 74lb BW and a 982lb weaning weight. His mother is a beautiful young Walter cow with a perfect udder and awesome feet that stems from the same cow family that produced one of our FNL heifers that sold to Siroski Simmentals.



WBC Ease - sire of lot 39-41

KWA SLIDER 196H
S: WBC EASE 6L
 BLAIR'S RED PARK 851H

CDI VEGAS 26X
 CROWE GOLDIE 3F
 WHL GOLD KEY 1619D
 BLAIR'S BAR D PARK 802G
 MRL BENDER 25F
 FLYF PEGS POCAHONTAS 720E
 NUG CARHARTT 211F
 WLB 42Z GAILYN 364E

MRL WALTER 47H
D: NUG TULIPE 512L
 WLB 211F CARLY 539H

40

NUG EASE 11N

HOMO POLLED PB

NUG 11N • PG1510120 • JAN.4.2025

BW	Sep5	Jan2	365 Adj
76	1005	1420	1473

CE	BW	WW	YW	MILK	MCE	MWWT
17.5	-1.7	88.3	122.2	27.5	9.7	71.7



Another really impressive Ease son that really pushed the scale down at weaning time. This bull has lots of herd bull character, he's dark red and hairy with ideal bone structure and high foot quality. These Ease calves are sure exciting, it's sure hard to find true calving ease bulls that don't sacrifice the power, performance and breed character that we are all after. 11N has an incredible EPD profile and impressive actual weights to back up the data.

KWA SLIDER 196H
S: WBC EASE 6L
 BLAIR'S RED PARK 851H

CDI VEGAS 26X
 CROWE GOLDIE 3F
 WHL GOLD KEY 1619D
 BLAIR'S BAR D PARK 802G
 WS ALL ABOARD B80
 WS MAJESTIC Z133
 KOP CROSBY 137W
 NUG JILLAN 434B

WS EPIC E152
D: NUG BRANDY 406L
 NUG MISS CROSBY 226J

WYATT
 HOWEY, B.S.C.
 Feed Sales Representative

Mobile: 1-781-312-1136 Fax: 1-781-252-9155
 Email: whwy@countryjunctionfeeds.com
 4227 426th Avenue
 Waterville, ME 05671
 www.countryjunctionfeeds.com

41**NUG BANDANA 42N**HOMO POLLED PB
NUG 42N • PG1513935 • JAN.12.2025

BW	Sep5	Jan2	365 Adj
86	944	1430	1543

CE	BW	WW	YW	MILK	MCE	MWWT
13.5	0.5	92.8	132.3	25.3	8.1	71.7



A really exciting, heavy haired Ease son here that would be a prospect for the heifer pen. Not that he is just a heifer bull, he has as much shape, presence, power and performance as any. He went from a modest 86lbs at birth to an impressive 944lbs at weaning and an adjusted yearling weight of 1543lbs. His mother is a beautiful uddered Rancher daughter that knocked it out of the park with this guy. It is worth a drive to come check out these Ease sons as they are impressive, unique and extremely high quality.

KWA SLIDER 196H
S: WBC EASE 6L
 BLAIR'S RED PARK 851H

SVS RANCHER 42H
D: NUG MADONNA 460L
 NUG POPPY 114G

CDI VEGAS 26X
 CROWE GOLDIE 3F
 WHL GOLD KEY 1619D
 BLAIR'S BAR D PARK 802G
 SVS TYCOON 841F
 HLTS SAMMIE
 MRL PRECISION 143E
 NUG TAYTON 23X

42**NUG MR 5N**HOMO POLLED PB
NUG 5N • PG1510096 • JAN.2.2025

BW	Sep5	Jan2	365 Adj
82	1040	1520	1584

CE	BW	WW	YW	MILK	MCE	MWWT
10.5	1.9	105.7	160.3	27.7	6.8	80.6

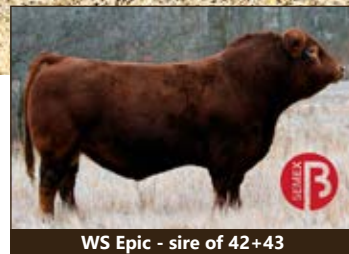


Here is a big framed, big footed, calving ease bull that sure doesn't give up any performance. 5N was born with a modest birth-weight of 82lbs and his 2 year old dam weaned him off at an impressive 1040lbs. 456L is a female that has a near perfect udder and is about as dark red as you can make them. She goes back to one of our most influential cow families with the Dream 103W cow in the background. If you're looking for a bull to add style and frame to your calves that will come easy at birth and wean off heavy then this guy is one to look at.

WS ALL ABOARD B80
S: WS EPIC E152
 WS MAJESTIC Z133

R PLUS YUMA 9087G
D: NUG LOLA 465L
 NUG DARLA 49G

WS ALL-AROUND Z35
 WS LITTLE SISTER W37
 GW RED COAT 099TS
 WS MOTHER LODGE W21
 R PLUS 5015C
 MISS R PLUS 3007A
 MRL VELOCITY 35E
 SKORS DREAM 103W



WS Epic - sire of 42+43

43**NUG MR 19N**

HOMO POLLED PB

NUG 19N • PG1510124 • JAN.5.2025

BW	Sep5	Jan2	365 Adj
97	932	1430	1529

CE	BW	WW	YW	MILK	MCE	MWWT
1.6	3.5	96.5	144.0	25.5	-1.3	73.8



Super big middle, stylish, attractive and powerful best describes this guy. He has that really nice blaze face which always seems to fetch a premium when you sell your calves in the fall. 19N is a calf with a lot of power and performance for being out of a first calver. His mother is a nice red blaze face cow that's a result of us breeding some really good fullblood cows to red bulls.

WS ALL ABOARD B80
S: NUG EPIC E152
 WS MAJESTIC Z133

BOUNDARY REVOLT 118F
D: NUG SANICHH 552L
 NUG TULIP 111F

WS ALL-AROUND Z35
 WS LITTLE SISTER W37
 GW RED COAT 099TS
 WS MOTHER LODE W21
 LFE RS LEWIS 813Y
 BOUNDARY TUMBLER 107D
 BAR KR AVALANCHE 52X
 NUG MISS 73X

44**NUG MR 52N**

HOMO POLLED PB

NUG 52N • PG1513945 • JAN.14.2025

BW	Sep5	Jan2	365 Adj
93	942	1275	1343

CE	BW	WW	YW	MILK	MCE	MWWT
8.4	3.5	86.1	110.4	27.3	3.5	70.4



A dark red baldy Top Tier son that is out of a heifer. This guy is stout and soggy with a nice head and crest on him. He has a really nice hair coat and is backed by a really nice young cow that traces back to one of our favorite cows, Emily 870U. 52N is smooth and balanced with a modest birthweight and an impressive weaning and yearling weight. Another bull that would work good on a group of young cows that you want to add a little chrome to the calf crop from.

MAR MAC UTAH WHISKY 52E
S: WLB TOP TIER 456G
 WLB 47Y FAE 343E

ERIXON LAD 107H
D: NUG MISS 536L
 NUG LEXI 71H

TNT BOOTLEGGER Z268
 MAR MAC UTAH'S DREAM 79U
 SUNNY VALLEY FORCE 47Y
 WLB 756T TRESSIE 3556B
 SVS BETTS 808F
 ERIXON LADY 75B
 MRL RED WHISKEY 101B
 MECK EMILY 870U



WLB Top Tier- sire



A pair of extremely high quality flush brothers here that are extremely impressive to see in person. They are as dark red and hairy as we can make them, good footed, soggy made, lots of character, long bodied and thick made. They have a full sister in the pen that is as good as any. Their mother, 462B, has been an awesome donor female for us. She passes on her power and soundness, udder quality and pigment. She is the dam of the NUG Rambler bull that works at Sky West and Wolfe's, he is the sire to a really good bull in the sale this year. We think these bulls are the kind that are hard to find and we plan on using one or both of them in our own program.



NUG 462B- dam



Silver Lake Jackson- sire

45 **NUG PACIFIC 92N**
 DILUTER FREE • HORNEFB
 NUG 92N • T1517011 • JAN.21.2025

BW	Sep5	Jan2	365Adj	CE	BW	WW	YW	MILK	MCE	MWWT
94	952	1395	1459	1.3	7.7	84.9	125.1	34.6	0.9	77.1

46 **NUG TITO 110N**
 DILUTER FREE • HORNEFB
 NUG 110N • T1517013 • JAN.26.2025

BW	Sep5	Jan2	365Adj	CE	BW	WW	YW	MILK	MCE	MWWT
94	872	1345	1441	5.4	7.0	86.0	124.0	34.6	2.4	77.6

SIBELLE POL DARWIN 21F
S: SILVER LAKE JACKSON 24J
 MCM MISS FARRAH FF 10F

STARWEST TOTAL VALUE
D: NUG MISS 462B
 NUG TERAN 738T

SIBELLE SPARTACUS 8A
 SIBELLE POL MOLLY 7B
 ANCHOR D HIGH NOON 247B
 BAR 5 BERTA DA ZURITA
 DOUBLE BAR D SPITFIRE 20X
 PHS POLLED WINFALL 27W
 BAR 5 SA HARRACH 801P
 NUG JOYEUSE 230M

47**NUG MERCEDESE 88N**DILUTER FREE • HORNED FB
NUG 88N • 1516054 • JAN.20.2025

BW	Sep5	Jan2	365 Adj
94	946	1390	1447

CE	BW	WW	YW	MILK	MCE	MWWT
4.4	6.5	86.0	122.6	36.2	3.5	79.2



NUG 228K - sire of lot 47

BLACK GOLD BATTLE 40H
S: NUG RAMBLER 228K
 NUG MISS 462B

ANCHOR D OUTLOOK
D: NUG MISS 29H
 NUG AUTHENTIC 41F

NAC BATTLE CRY 4F
 BLACK GOLD MS EILEEN 68F
 STARWEST TOTAL VALUE
 NUG TERAN 738T
 VIRGINIA PRECISION 16C
 ANCHOR D KAEL 255C
 NUG RAMADA 319X
 NUG MISS 120Y

This guy is as impressive and complete as any in the pen. He is so dark red and hairy with big double goggles, thick made and soggy with a little extra length. His mother is an awesome Outlook daughter that is in the prime of her life. He has a nice udder with lots of milk and really good feet. His sire was our high selling bull a couple years ago that sold to Sky West and Wolfe. Rambler is a maternal brother to the 2 really good Jackson sons this year. 88N is packed with power and muscle and is loaded with our best cow families on both sides of his pedigree.

48**NUG TIDAL 98N**DILUTER FREE • HETERO POLLED FB
NUG 98N • PT1516186 • JAN.23.2025

BW	Sep5	Jan2	365 Adj
96	906	1250	1293

CE	BW	WW	YW	MILK	MCE	MWWT
1.3	8.5	91.1	138.3	37.2	1.7	82.8



NUG 462B - dam of lot 48

SBV REPUTATION 707F
S: NUG ADVANTAGE 104J
 NUG DANDIE 605D

CHERRY CREEK GLITZ 4D
 SUNNY VALLEY RHEA 54C
 ANCHOR D IMAX 250Y
 NUG TYRA 424B

STARWEST TOTAL VALUE
D: NUG MISS 462B
 NUG TERAN 738T

DOUBLE BAR D SPITFIRE 20X
 PHS POLLED WINFALL 27W
 BAR 5 SA HARRACH 801P
 NUG JOYEUSE 230M

Here is the polled option out of the 462B calves this year. This guy is soggy made and big middled with lots of hair. He is sired by the great breeding bull NUG Advantage, he has had son top sales in every program he was used, his daughters are awesome looking and are proving their worth in their early years of production. You can see the consistency in the bulls out of 462B and this guy should add that into your calf crop.

49**NUG ELEVATE 29N**
DILUTER FREE • HETERO POLLED FB
NUG 29N • PT1516184 • JAN.9.2025

BW	Sep5	Jan2	365 Adj
92	972	1440	1497

CE	BW	WW	YW	MILK	MCE	MWWT
6.5	5.3	80.0	123.0	37.3	5.1	77.3



SBV REPUTATION 707F
S: NUG ADVANTAGE 104J
NUG DANDIE 605D

SBV AFTER HOURS 556H
D: SBV EMMA 911K
SBV EMMA 413G

CHERRY CREEK GLITZ 4D
SUNNY VALLEY RHEA 54C
ANCHOR D IMAX 250Y
NUG TYRA 424B
LFE BREAKING CURFEW 511E
SBV MS BEAT 179D
SUNNY VALLEY EXCLUSIVE 28D
SBV EMMA 11C



SBV 911K- dam



Advantage - sire of lot 48-50

A really cool polled Advantage calf off of our leading fullblood donor cow, SBV 911K. Elevate has a lot of the attributes that we search for in a herd sire. He is long bodied and sound, thick made with lots of hair, dark red and attractive and backed by a beautiful cow. The Advantage females are still young but they are sure doing a nice job in their first years of production. This is a bull that should sire highly sought after females and high quality, powerful bulls. 911K is a beautiful individual in her own right with a pretty cool production record in her first 2 years. Her first calf was NUG Pit Boss that slod last year to Kuntz Simmentals. Then we flushed her to Advantage to produce this guy and 2 full sisters that are both extremely high quality. 911k's dam is the dam of the great breeding bull Modano. A really cool bull here that's backed by a proven and predictable pedigree.

50**NUG MR 55N**
HETERO POLLED FB
NUG 55N • P1513949 • JAN.14.2025

BW	Sep5	Jan2	365 Adj
94	855	1205	1247

CE	BW	WW	YW	MILK	MCE	MWWT
5.6	5.2	72.3	100.2	33.7	5.0	69.9



SBV REPUTATION 707F
S: NUG ADVANTAGE 104J
NUG DANDIE 605D

CHERRY CREEK GLITZ 4D
SUNNY VALLEY RHEA 54C
ANCHOR D IMAX 250Y
NUG TYRA 424B

JNR'S PHILOSOPHY
D: NUG TRACY 623D
NUG CINNOMINN 433B

JNR'S SALTON
KEATO MS TAJSA 72T FF
SOUTHSEVEN ZORRO 49Z
NUG MIRA 947W

55N is a really stylish and attractive bull with that dark red color, wrap around goggles and nice polled head. His mother is a highly productive, short marked, Philosophy cow that is fault free and goes back to one of our very best cow families stemming from South-Holden Mira 27M. This is a bull that should add eye appeal, fleshing ability and foot quality to his calf crop.

51**NUG INDIGO 65N**DILUTER FREE • HETERO POLLED FB
NUG 65N • P1513962 • JAN.16.2025

BW	Sep5	Jan2	365 Adj
86	932	1285	1304

CE	BW	WW	YW	MILK	MCE	MWWT
9.6	1.4	66.0	89.8	35.1	6.2	68.1



Here is a pretty cool polled Modano calf and would be the only Modano bull calf that was born here in 2025. We do have a nice group of Modano heifer calves in the pen, they are really right for the times and he's a bull we believe in and you will see more from him in our program in the future. His mother, 605D is a really good Imax daughter that is so solid and has a pretty great production record. Her best work would be the Advantage bull that walks at Johnston Ranching.

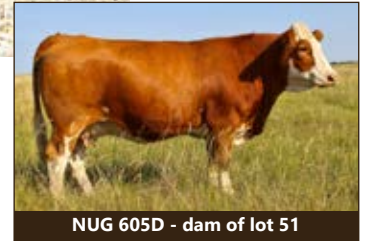
SILVER LAKE JACKSON 24J
S: SBV MODANO 518L
SBV EMMA 413G

ANCHOR D IMAX 250Y
D: NUG DANDIE 605D
NUG TYRA 424B

SIBELLE POL DARWIN 21F
MCM MISS FARRAH FF 10F
SUNNY VALLEY EXCLUSIVE 28D
SBV EMMA 11C
HEMR SAMURAI 7S
DORA LEE ELEXIS
ANCHOR "T" RUSTY 59G
NUG NICKEY 92L



SBV Modano - sire of lot 51



NUG 605D - dam of lot 51

52**NUG EMPIRE 39N**HORNED FB
NUG 39N • 1513919 • JAN.12.2025

BW	Sep5	Jan2	365 Adj
92	1030	1480	1511

CE	BW	WW	YW	MILK	MCE	MWWT
6.0	5.0	85.7	124.6	33.6	5.4	76.5



Big framed, thick made, long as a train, soggy middle with lots of herd bull character and that big square hip. Here would be the first son to sell out of our new herd sire that we sourced out of Manitoba from Kooba Cattle Co. for his depth, color and length of body. 39N comes from an awesome cow family, 203J is a nice moderate framed Avalanche cow that has awesome feet and a really good udder. Her dam is the 675D cow that would be a favorite around here with an incredible track record. If we could make all our cows, regardless of color, just like 675D, we would do it.

JDMS MR.HYATT 39D 131H
S: KOOBA 1L
OAKVIEW HOLLIE 415H

BAR KR AVALANCHE 52X
D: NUG JORDYN 203J
NUG KRYSTAL 675D

RENDEZVOUS MAX 450E
AFRI-CAN DANA 39D
SKYRIDGE SLAPSHOT 11F
OAKVIEW CHRISSY 96C
BAR 5 SA HARRACH 801P
BAR KR MS RUSTY 68N
STARWEST TOTAL VALUE
NUG CHIQUITTA 275T



675D - maternal grand dam

53**NUG VENTURE 124N**
DILUTER FREE • HORNED FB
NUG 124N • UNR1516142 • FEB.4.2025

BW	Sep5	Jan2	365 Adj
96	986	1500	1643

CE	BW	WW	YW	MILK	MCE	MWWT
6.6	5.4	92.7	140.9	38.2	5.3	84.6



This Shook calf has as much muscle shape, power and dimension as any bull in the pen. He has big wrap around goggles, dark red and extra masculinity. We purchased Shook to add a different pedigree option for our commercial customers and his mother is a beautiful cow. These calves are thick and stylish and are exceeding our expectations. I think the real strength of the Shook sire group will be the daughters that he leaves as they are right for the times and look good in the replacement pen. I would expect 124N to pass the same characteristics to his calves with a little more muscle and power.

HPR WILLIAM 117G
S: SAJ SHOOK 96L
SAJ BETSY 64E

LFE JUSTIFIED 7328X
D: NUG JANIE 310J
NUG DEVRA 653D

ANCHOR D DISCO 79D
MMWK MS TRACY 117D
KHG DIESEL 151A
CROSSROAD BETSY 515B
LRX JUSTICE 33U
NUG FARRAH 693S
LFE HILTON 519A
SOUTH-HOLDEN MIRA 27M



NUG 310J - dam of lot 53

54**NUG SHOOK 46N**
HORNED FB
NUG 46N • UNR1513941 • JAN.13.2025

BW	Sep5	Jan2	365 Adj
92	932	1330	1382

CE	BW	WW	YW	MILK	MCE	MWWT
7.2	4.6	85.1	122.5	35.9	4.6	78.4



Moderate framed, stout made and super dark red with wrap around goggles. 46N is low set and big middle with a masculine crest and head. Shook is a bull that we purchased from SAJ in Lloyd a couple years ago and he has not disappointed. They are consistent in type and color and the heifer calves look like they are going to be the right kind. 119K is a nice uddered, big bodied young Fusion daughter that has really good feet. Lots of people will find this guy on sale day as he has that added eye appeal and thickness.

HPR WILLIAM 117G
S: SAJ SHOOK 96L
SAJ BETSY 64E

SKYWEST FUSION
D: NUG KARMAN 119K
NUG MOLLIE 104Z

ANCHOR D DISCO 79D
MMWK MS TRACY 117D
KHG DIESEL 151A
CROSSROAD BETSY 515B
KUNTZ DURAMAX 12D
SKYWEST CHARLOTTE
BAR KR AVALANCHE 52X
NUG RITA 509R

55**NUG MR SHOOK 111N**

HORNED FB

NUG 111N • UNR1516084 • JAN.26.2025

BW	Sep5	Jan2	365 Adj
95	898	1215	1295

CE	BW	WW	YW	MILK	MCE	MWWT
7.4	4.9	86.2	123.1	37.8	5.5	80.9



Here is another smooth made, really complete bull out of the SAJ Shook bull. The consistency in type and color on these Shook sired bulls is really impressive. This guy is moderate framed and attractive with really good feet and correct in his structure. His mother is a hard working Navaho daughter with a good udder. A bull that will add style and eye appeal to his calves and would cross really nice on a set of British type cows.

HPR WILLIAM 117G
S: SAJ SHOOK 96L
 SAJ BETSY 64E

ANCHOR D DISCO 79D
 MMWK MS TRACY 117D
 KHG DIESEL 151A
 CROSSROAD BETSY 515B

NUG NAVAHO 77C
D: NUG ARYA 160K
 NUG POPPY 104F

CROSSROAD RADIUM 789U
 NUG THERESA 949W
 STARWEST POL BLUEPRINT
 NUG LACE 830U

56**NUG HOUSTON 116N**

HORNED FB

NUG 116N • 1516127 • FEB.2.2025

BW	Sep5	Jan2	365 Adj
91	934	1325	1426

CE	BW	WW	YW	MILK	MCE	MWWT
4.2	6.7	86.9	126.7	29.3	2.3	72.8



Houston is nice haired and complete with a single goggle. His mother is a daughter of the 462B cow who has the Jackson sons at the front of the book. She is an awesome uddered, productive Impact daughter that did a really nice job on this calf. The Kaptan Cook calves have some extra thickness and muscle with an up headed, attractive look to them. 116N is the cattlemen's kind and

I would best describe him as an all-around complete individual.



NUG 462B- maternal granddam

JNR STERLING
S: JAYSHAW MR KAPTAIN COOK 34K
 JSEE MS DANNA

JNR'S SLATE
 JNR'S GRACEFUL 613C
 RAFTER 4T NO LIMIT 28A
 MS XANNE LANE 6X

ANCHOR "T" IMPACT 2H
D: NUG IMPRESSION 54H
 NUG MISS 462B

ANCHOR "T" METRO 4E
 ANCHOR "T" HELGA 10Y
 STARWEST TOTAL VALUE
 NUG TERAN 738T

57**NUG KAPTAIN 103N**

HORNED FB

NUG 103N • 1516072 • JAN.24.2025

BW	Sep5	Jan2	365 Adj
98	886	1330	1406

CE	BW	WW	YW	MILK	MCE	MWWT
4.1	5.4	81.1	120.4	30.2	1.7	70.8



Big framed, long bodied, thick made, double goggled and red to the ground. This guy is a typical Kaptan Cook son that is stretchy and sound made with lots of muscle. His dam is a really good young Fusion daughter that has a really good udder. 76H goes back to the great Nickey 92L cow that has done so much for us. This guy has an outcross pedigree for our program yet goes back to one of our very best cow families. His maternal grand dam, 509C, just calved here at 11 years of age and still remains really sound and functional. Longevity and productivity bred into him.

JNR STERLING
S: JAYSHAW MR KAPTAIN COOK 34K
 JSEE MS DANNA

JNR'S SLATE
 JNR'S GRACEFUL 613C
 RAFTER 4T NO LIMIT 28A
 MS XANNE LANE 6X

SKYWEST FUSION
D: NUG NICKEY 76H
 NUG MISS 509C

KUNTZ DURAMAX 12D
 SKYWEST CHARLOTTE
 BAR 5 SA HARRACH 801P
 NUG NICKEY 92L

58

NUG PRELUDE 125N

HORNED FB

NUG 125N • 1517644 • FEB.5.2025

BW	Sep5	Jan2	365 Adj
100	940	1325	1562

CE	BW	WW	YW	MILK	MCE	MWWT
4.8	5.4	87.1	125.2	33.9	3.6	77.4



An awesome colored, attractive made, deep, long, thick bull with lots of hair. 125N is the type of bull that we have come to expect from the Kaptain Cook bull. Structurally this bull is fault free and he is easy moving. His mother is an ideal sized cow with a good udder and nice feet under her. She goes back so some of our most proven cow families. 125N will add eye appeal, performance and style to his calves and the color and hair should be locked in on this guy. Bulls like this are the fun ones in the picture pen as it seems like they are showing off and never stand wrong.

JNR STERLING
S: JAYSHAW MR KAPTAIN COOK 34K
 JSEE MS DANNA

NUG RADIANCE 11D
D: NUG JOSIE 11H
 NUG MISS 64E

JNR'S SLATE
 JNR'S GRACEFUL 613C
 RAFTER 4T NO LIMIT 28A
 MS XANNE LANE 6X
 CROSSROAD RADIUM 789U
 NUG MONARCH 134A
 NUG RAMADA 319X
 NUG MISS 120Y



Kaptain Cook - Sire of lot 56-60

59

NUG IMPACT 164N

DILUTER FREE • HORNED FB

NUG 164N • 1518211 • MAR.7.2025

BW	Sep5	Jan2	365 Adj
92	804	1300	

CE	BW	WW	YW	MILK	MCE	MWWT
5.1	4.9	86.0	131.9	30.0	3.6	73.0



The youngest fullblood bull in the pen and if you are looking to raise females I would put this guy towards the top of the list. His age is a consequence of his dam being a donor cow who could be argued as the most consistent producing fullblood female that has walked our farm. She has put 9 bulls through this sale and daughters at Crossroad Farms as well as Robb Farms. We have 4 first calving daughters which we can't wait to see their production record. Her oldest daughter is the mother of 39N who is a testament to what this cow family can produce.

JNR STERLING
S: JAYSHAW MR KAPTAIN COOK 34K
 JSEE MS DANNA

STARWEST TOTAL VALUE
D: NUG KRYSTAL 675D
 NUG CHIQUITTA 275T

JNR'S SLATE
 JNR'S GRACEFUL 613C
 RAFTER 4T NO LIMIT 28A
 MS XANNE LANE 6X
 DOUBLE BAR D SPITFIRE 20X
 PHS POLLED WINFALL 27W
 GIDSCO APPOLLO 3F
 NEW TREND SASSY 6K



675D - dam of lot 59

60**NUG RIATA 162N**

HORNED FB

NUG 162N • 1518206 • MAR.3.2025

BW	Sep5	Jan2	365 Adj
100	824	1260	1504

CE	BW	WW	YW	MILK	MCE	MWWT
8.0	3.5	93.6	137.2	27.4	8.0	74.2



Just like the other Kaptain Cook sons 162N has that dark red haircoat, extra ribshape, and added muscling. The first calf from the up and coming dam of this bull was a high selling female at the Classic Heifer sale this past fall to Black Gold Simmentals and patterned very similar to this guy in terms of haircoat and natural fleshing ability. The cow family behind 162N have been bull producing factories placing dozens of sons through the sale to both purebred and excellent commercial herds. Another time tested bull that will produce both top end replacement females or a consistent group of steers.



NUG 259M - maternal sib

JNR STERLING
S: JAYSHAW MR KAPTAIN COOK 34K
 JSEE MS DANNA

JNR'S SLATE
 JNR'S GRACEFUL 613C
 RAFTER 4T NO LIMIT 28A
 MS XANNE LANE 6X

NUG NAVAHO 77C
D: NUG KATNISS 146K
 NUG ELECTRA 15Y

CROSSROAD RADIUM 789U
 NUG THERESA 949W
 SBV IMPERIAL 204W
 NUG TIFFANY 220M

61**NUG CHESAPEAKE 64N**

HORNED FB

NUG 64N • UNR1517008 • JAN.16.2025

BW	Sep5	Jan2	365 Adj
96	956	1325	1349

CE	BW	WW	YW	MILK	MCE	MWWT
1.5	7.5	90.6	131.5	23.6	-0.5	68.9

**61**

Here is a bit of a throwback pedigree that has still a lot to offer todays industry. 64N and 80N are big framed, thick, long bodied bulls that are awesome footed and has good hair and pigment. Their dam, 92L, is a 2001 model that we talk about a lot around the farm. This is the stem of one of our very best cow families and would be the same cow family that produced the great breeding bull Advantage. We put these embryos in hoping to get heifer calves and have a couple direct 92L daughters for the future, both came as bulls and both are high quality. We wished for heifers and you get the pick of these 2 really good bulls.

BHR DOORN G629E
 SHAWACRES JAHARI 50L
 MISS SHAWACRES HEIDI 1H
S: DOUBLE BAR D CHESAPEAKE
 ELDANDI 907H
 MFI HELGA 4021
 ANCHOR "T" ERNA 67L
 METRO
 ANCHOR "T" METRO 4E
 GISELA
D: NUG NICKEY 92L
 GREAT GUNS KARL 17C
 NUG KARLA 554K
 NUG MISS BEST 523E

**62**

RLD Chesapeake - sire of lots 61&62

62**NUG SARACHA 80N**

HORNED FB • DILUTER FREE

NUG 80N • T1517006 • JAN.18.2025

BW	Sep5	Jan2	365 Adj
99	818	1250	1319

CE	BW	WW	YW	MILK	MCE	MWWT
0.6	8.8	94.3	139.4	23.7	-1.6	70.9

63**NUG MATADOR 44N**

HORNED FB

NUG 44N • 1513940 • JAN.13.2025

BW	Sep5	Jan2	365 Adj
95	920	1360	1466

CE	BW	WW	YW	MILK	MCE	MWWT
7.5	4.9	79.2	115.7	38.1	4.6	77.7



An impressive Wildcard son that is really complete and smooth made. He has really good feet, dark red hair, a big square hip and an attractive, masculine front end. Maybe our favorite part of this calf is just how honest and sound made he is. His mother in a nice Advantage daughter that weaned this guy off at a whopping 920lbs at the end of August. This is a bull that would cross really nice on a set



SBV Wild Card- sire of lot 63+64

of British influenced cows and the resulting calves should be worth a premium, especially the heifers.

ANCHOR D OUTLOOK
S: SBV WILDCARD 500J
SBV FARRAH 431G

VIRGINIA PRECISION 16C
ANCHOR D KAEL 255C
CHERRY CREEK GLITZ 4D
SBV FARRAH 322X

NUG ADVANTAGE 104J
D: NUG SASHA 482L
NUG NIOMIE 215B

SBV REPUTATION 707F
NUG DANDIE 605D
BAR KR AVALANCHE 52X
NUG CHIQUITTA 275T

64**NUG PRETZEL 74N**

DILUTER FREE • HORNED FB

NUG 74N • 1513976 • JAN.17.2025

BW	Sep5	Jan2	365 Adj
94	888	1335	1459

CE	BW	WW	YW	MILK	MCE	MWWT
7.3	5.3	81.2	124.2	35.9	3.4	76.5



Moderate framed, soggy made, dark red, goggle eyed and attractive best describes 74N. This group of Wild Card bulls are all out of first calf heifers and we think they are really impressive and a testament to what our young fullblood cows are capable of. 461L is a nice polled Advantage daughter that is ultra-feminine with a real nice udder. A nice mix of calving ease and performance with a



Advantage- grand sire

highly maternal pedigree. It's always nice to find a bull like this that will sire steer calves that carry a few extra pounds but it's a real bonus when you can sell the heifer calves for more than the steers.

ANCHOR D OUTLOOK
S: SBV WILDCARD 500J
SBV FARRAH 431G

VIRGINIA PRECISION 16C
ANCHOR D KAEL 255C
CHERRY CREEK GLITZ 4D
SBV FARRAH 322X

NUG ADVANTAGE 104J
D: NUG PRECIOUS 461L
NUG PRECIOUS 88G

SBV REPUTATION 707F
NUG DANDIE 605D
STARWEST POL BLUEPRINT
NUG PRECIOUS 957W

65**NUG TUXEDO 21N**

HORNED FB

NUG 21N • 1510324 • JAN.6.2025

BW	Sep5	Jan2	365 Adj
82	856	1300	1395

CE	BW	WW	YW	MILK	MCE	MWWT
12.2	2.2	62.4	86.0	30.0	4.5	61.2



Here is a really nice calving ease bull in the fullblood pen. 21N is ideal in terms of colour and hair coat, foot quality and overall balance. He came in dam from a female we purchased from Langer's at Western Harvest. 3L is a hairy, dark red Outlook daughter that has a really nice udder and did an awesome job on this guy for her first year, bringing him home at 856lbs. We think there is a lot of future in this guy, weather you use him in the heifer pen or want to add some calving ease and style into your cow herd.

DOUBLE BAR D EVEREST 4R
S: CROSSROAD TUXEDO 222T
MISS ARNOLD K5934

EMIL
DOUBLE BAR D LYNN 89M
SIR ARNOLD 809G
RIVERBEND BRIDGIT 15A

ANCHOR D OUTLOOK
D: LFS HOTTY 3L
LFS EVA 56E

VIRGINIA PRECISION 16C
ANCHOR D KAEL 255C
ANCHOR D MAROON 295B
DIAMOND T 291T

66**NUG MR 37N**

HORNED FB

NUG 37N • 1513913 • JAN.11.2025

BW Sep5 Jan2 365 Adj

94 846 1225 1313

CE BW WW YW MILK MCE MWWT

7.8 3.0 58.5 74.4 36.7 1.0 66.0



Here is a smooth made, dark red, moderate framed bull with those nice wrap around goggles. 37N bred for calving ease and maternal strength with his sire being the proven Imax bull and his maternal grandsire being the great Anchor T Metro. His dam goes back to one of our very best cows, 102Z was a favorite of ours for the entirety of her life and we are happy to have some daughters to carry that cow family on. The way the fullblood influence females sold this fall, bulls like this can offer a lot on a group of young red or black cows.

HEMR SAMURAI 7S
S: ANCHOR D IMAX 250Y
 DORA LEE ELEXIS

ANCHOR "T" IKON 1H
 JB CDN KANANASKIS 4019
 DORA LEE JAKE
 DORA LEE ELECTRA

ANCHOR "T" METRO 4E
D: NUG TRINITY 474L
 NUG JUSTICE 333J

METRO
 GISELA
 SKYWEST FUSION
 NUG PURDY 102Z

67**NUG KOMBUCHA 109N**

HORNED FB

NUG 109N • 1516083 • JAN.26.2025

BW Sep5 Jan2 365 Adj

105 804 1240 1361

CE BW WW YW MILK MCE MWWT

4.1 5.9 69.9 101.9 34.5 2.5 69.5



NUG KOMBUCHA 109N is a real sale feature. He is exactly what we want in terms of color and hair, foot quality and eye appeal. He is moderate framed and thick made with extra length and backed by an awesome young cow. 156K is deep and broody, sound made and good uddered with 2 of our best cow families backing her up. Outlook is the sire of some of our nicest young cows and they are incredibly productive. We think the group of bulls for sale this year are as good as they've ever been and we are excited for everyone to see them in February.

VIRGINIA PRECISION 16C
S: ANCHOR D OUTLOOK
 ANCHOR D KAEL 255C

VIRGINIA RADISON 5Z
 BROCK YODA
 FGAF BARBOSSA 707X
 ANCHOR D RUBY RED 198A
 CROSSROAD RADIUM 789U
 NUG THERESA 949W
 NUG RAMADA 319X
 NUG MISS 120Y

NUG NAVAHO 77C
D: NUG KAYLIN 156K
 NUG AUTHENTIC 41F



Anchor D Outlook- sire

68**NUG LANCE 27N**
DILUTER FREE • HETERO POLLED FB
NUG 27N • P1510343 • JAN.8.2025

BW	Sep5	Jan2	365 Adj
100	940	1445	1485

CE	BW	WW	YW	MILK	MCE	MWWT
3.1	6.6	84.0	126.1	37.8	1.1	79.8



Here is a really long bodied, sound made bull with lots of presence and power and that nice polled head. This guy is dark red, hairy and maternally bred. His sire is a past high seller of ours that sold to Mark Land and Cattle and 619 Cattle. His Dam is a dark red powerful female that was our pick of the Westgold females in her respective year. If you need a bull to add some pounds to your steer calves and add some milk and productivity to your heifer calves, this might be your guy.



NUG Lance 47L - sire of lot 68

NUG ADVANTAGE 104J
S: NUG LANCE 47L
NUG JACEK 18G

SBV REPUTATION 707F
NUG DANDIE 605D
VIRGINIA PAYDIRT 44E
NUG PURDY 102Z

RAFTER 4T FORTY CREEK 7E
D: KHG CHANA 218G
MMWK TRACY 43C

RAFTER 4T NO LIMIT 28A
RAFTER 4T BRIANNA 7B
BAR 5 SA HARRACH 801P
4L MS TRACY 43T

69**NUG TOP NOTCH 102N**
HORNED FB
NUG 102N • 1518629 • JAN.24.2025

BW	Sep5	Jan2	365 Adj
94	944	1360	1471

CE	BW	WW	YW	MILK	MCE	MWWT
3.9	5.6	83.3	119.2	34.6	4.2	76.3



Here is a big time herd bull in the making with that extra chrome on him. He is super stout and long bodied with an incredible amount of character and presence to him. He is out of one of the most beautiful fullblood cows that we have and sired by the great breeding bull Jackson. The females that this guy will produce will be second to none and he will sire growthy, stout, impressive male calves. If you are looking to add a bull that is very high quality that has a unique look and backed by an awesome cow, here's your guy.



SBV 911K- dam



Silver Lake Jackson - sire

SIBELLE POL DARWIN 21F
S: SILVER LAKE JACKSON 24J
MCM MISS FARRAH FF 10F

SIBELLE SPARTACUS 8A
SIBELLE POL MOLLY 7B
ANCHOR D HIGH NOON 247B
BAR 5 BERTA DA ZURITA

SBV AFTER HOURS 556H
D: SBV EMMA 911K
SBV EMMA 413G

LFE BREAKING CURFEW 511E
SBV MS BEAT 179D
SUNNY VALLEY EXCLUSIVE 28D
SBV EMMA 11C

70**NUG RUBICON 60N**
DILUTER FREE
NUG 60N • UNR1516411 • JAN.15.2025

BW	Sep5	Jan2	365 Adj
110	1012	1425	1469

CE	BW	WW	YW	MILK	MCE	MWWT
4.2	5.5	76.4	105.7	36.5	1.4	74.7



A big rugged made Rumble son that is hard to find a hole in. He has that hair and pigment that everyone is striving for, he's thick made and long bodied with that nice herd bull look to him. This calf is a result of some embryos that we purchased from a cow that we really thought highly of. When we had a chance to purchase that cow this fall in auction we jumped on it. She is truly pleasing to look at, so dark red and sound made with big dark feet, an ideal udder, she is massive yet feminine and a real gentle attitude. Expect to see more from this cow in the future.



MAVV Hazy 99H - dam



BLL Rumble- sire

SIBELLE SUGAR RAY 25F
S: BLL RUMBLE 62H
BEE COUTURE 663D

SIBELLE SPARTACUS 8A
SIBELLE POL CROCUS 20D
FGAF MAGNUM 901Z
EAGLE-RIDGE ULTRA 26U

ANCHOR D RUBICON 525E
D: MAVV HAZY 99H
MI MISS ESTHER 15E

FGAF FRENCH ATTACK 010C
ANCHOR D KAEI 255C
BEE BATTLE CRY 282B
MI MISS CECE 38C

71**NUG PAY WEIGHT 45N**
HOMO POLLED • HETERO BLACK PB
NUG 45N • BPTG1516178 • JAN.13.2025

BW	Sep5	Jan2	365 Adj
112	1090	1465	1492

CE	BW	WW	YW	MILK	MCE	MWWT
5.1	4.2	95.9	149.5	19.6	6.6	67.6



PayWeight is a real performance bull with that added frame, length and stoutness. He was an early maturing calf that caught our attention at a young age. We has this bull in our stall at Farmfair this fall where he was slapped as Champion Sr. bull calf in the Simmental show. I think I mentioned it about all 4 of 38K's bulls but this cow is one that we are really high on and think she is going to make a name for herself in the years to come. Her foot and udder quality is extremely high and I think the proof is in these bulls when you lay eyes on them. This is the kind of black bull that we are looking for when we go herd bull shopping.

**NUG 45N at Farmfair****38K- dam of lot 71- 74**

NGDB STRUCTURE 34D
S: RF CALIBER 014G
RF NOT JUST A FLIRT 404B

MRL WALTER 47H
D: NUG KAYLA 38K
NUG TEAL 79G

NCB COBRA 47Y
NGDB LOUISE 411 B
SVS CAPTAIN MORGAN 11Z
RF CERTAINLY FLIRTIN 202Z
MRL BENDER 25F
FLYF PEGS POCAHONTAS 720E
PVF-BF BF26 BLACK JOKER
NUG LIBBY 55E

Magnum is a moderate framed, thick made, extremely masculine calf that is sure hard to fault. With these 3 flush brothers we sure think it shows the consistency and quality that all 3 of them will throw onto their offspring. Magnum would be the most moderate of the 3 but also the stoutest and most muscular. The best part of these three is without question their Walter dam. She is a beautiful young donor cow that knocked it out of the park on her first flush. 17N has some breed greats in his pedigree with 404B, 411B, 202Z, 37U on the top side and 38K, 79G, 55E and 4Z on the bottom. It's pretty cool when you can stack that many extreme high quality cows into one bull.

**RF Caliber- sire of lot 71-73****72****NUG MAGNUM 17N**
HOMO POLLED • HETERO BLACK PB
NUG 17N • BPTG1516175 • JAN.5.2025

BW	Sep1	Jan5	365Adj
90	1070	1515	1537

CE	BW	WW	YW	MILK	MCE	MWWT
5.2	5.1	107.1	169.2	19.6	6.0	73.2

73**NUG TURINO 35N**HOMO POLLED • HOMO BLACK PB
NUG 35N • BPTG1516177 • JAN.11.2025

BW	Sep5	Jan2	365 Adj
100	1065	1600	1675

CE	BW	WW	YW	MILK	MCE	MWWT
8.5	5.7	105.6	172.9	19.6	7.7	72.4



35N would be the biggest framed, longest bodied of these 3 brothers. He is super attractive and powerful with perfect feet and a beautiful mother. It seems like we talk about the cow in every footnote but we believe it is important to have high quality cows that back our herd bulls. It has been said that bulls will sire daughters that look like their mother. If that proves to be true, 35K should leave a set of daughters that anyone would be thrilled to have.

NGDB STRUCTURE 34D
S: RF CALIBER 014G
RF NOT JUST A FLIRT 404B

MRL WALTER 47H
D: NUG KAYLA 38K
NUG TEAL 79G

NCB COBRA 47Y
NGDB LOUISE 411 B
SVS CAPTAIN MORGAN 11Z
RF CERTAINLY FLIRTIN 202Z
MRL BENDER 25F
FLYF PEGS POCAHONTAS 720E
PVF-BF BF26 BLACK JOKER
NUG LIBBY 55E



granddam of lot 71-74

74**NUG NICKEL 33N**HOMO POLLED • HOMO BLACK PB
NUG 33N • BPG1513876 • JAN.10.2025

BW	Sep5	Jan2	365 Adj
89	958	1455	1544

CE	BW	WW	YW	MILK	MCE	MWWT
8.0	2.7	90.9	140.5	21.9	6.9	67.4



33N is the natural calf off of the 38K cow that has 3 awesome Caliber sons in the sale. As the Caliber brothers are a true sale feature and some of our most exciting calves, this guy runs right with them. His sire Fleetwood has sired us a really consistent set of bull calves year after year but his true strong point would be the females that he's leaving us. They are easy doing and attractive with really nice udders. 33N has some extra frame and stretch to him with a nice head and front 1/3.

CMS SOCHI 307A
S: R PLUS FLEETWOOD 1012J
MISS R PLUS 9495G

MRL WALTER 47H
D: NUG KAYLA 38K
NUG TEAL 79G

DRAKE POKER FACE 2X
YR BLK PRIMADONNA 930W
R PLUS 7141E
MISS R PLUS 4005B
MRL BENDER 25F
FLYF PEGS POCAHONTAS 720E
PVF-BF BF26 BLACK JOKER
NUG LIBBY 55E



Fleetwood- sire

75**NUG LAMPOON 73N**HOMO POLLED • HETERO BLACK PB
NUG 73N • BPG1513973 • JAN.17.2025

BW	Sep5	Jan2	365 Adj
96	910	1405	1475

CE	BW	WW	YW	MILK	MCE	MWWT
4.2	5.0	92.1	142.1	19.7	3.3	65.8



A big stout Caliber son that has a lot of character and power in him. He is big framed and sound with an awesome hair coat and big square feet. His mother came to us from the R Plus program and grabs your attention for her udder quality, femininity and broodiness. This is a bull that was among our favorites from a young age and he draws a look every time you walk in the pen. He should leave a beautiful set of daughters and a heavy early maturing set of sons. This a bull that is right for the times as this kind that never goes out of style.

NGDB STRUCTURE 34D
S: RF CALIBER 014G
RF NOT JUST A FLIRT 404B

R PLUS 5015C
D: MISS R PLUS 9221G
MISS R PLUS 3095A

NCB COBRA 47Y
NGDB LOUISE 411 B
SVS CAPTAIN MORGAN 11Z
RF CERTAINLY FLIRTIN 202Z

WFL ABSOLUTE 51Y
IPU MS. 56U LINER 15A
R PLUS HARD ROCK 145X
MISS R PLUS1012Y



9221G- dam RF Caliber- sire

76**NUG INTERLINE 15N**HOMO POLLED • HOMO BLACK PB
NUG 15N • BPG1510123 • JAN.5.2025

BW	Sep5	Jan2	365 Adj
98	1070	1595	1613

CE	BW	WW	YW	MILK	MCE	MWWT
8.9	4.1	93.0	152.1	19.8	7.7	66.3



Interline is a pretty intriguing individual. These Walter sired calves are sure easy to find in the pen. 15N is big framed and long bodied with an ideal foot under him. His mother is broody 4W daughter that came from the Skor dispersal and she has sure produced. 15N is a full brother to the great breeding bull, NUG DarkHorse that is working at Horner's. The most exciting part of this guy is the females that he will leave. The Walter daughter are beautiful young cows in terms of foot and udder quality, temperament and fleshing ability. 27G will only add to those characteristics. No guess work with this guy.

MRL BENDER 25F
S: MRL WALTER 47H
FLYF PEGS POCAHONTAS 720E

SKORS BLACK ENTICER 4W
D: SKORS LADY FREDA 27G
SKORS LADY FREDA 55B

HART STATE OF WAR 056C
MRL MISS 6823D
MRL MWC 41B
IPU MS. CROSBY 120Y
SHS ENTICER P1B
SKORS MISS JOKER 10N
3D BLK FULL THROTTLE 483X
SKORS LADY FREDA 164X



Walter- sire



Darkhorse- full sib

77**NUG CINCH 7N**HOMO POLLED • HETERO BLACK PB
NUG 7N • BPG1510116 • JAN.3.2025

BW	Sep5	Jan2	365 Adj
95	1090	1590	1588

CE	BW	WW	YW	MILK	MCE	MWWT
8.3	2.6	92.4	141.2	27.2	6.7	73.4



Cinch is a powerful and attractive son of the high selling Dark Horse bull that Horner's bought from us in 2024. He has a really nice, balanced set of EPD's, added frame and power with a really maternal pedigree. His mother is a calving ease bred cow that has a beautiful udder, awesome feet and a strong production record. 7N has that attractive blaze face, a modest birthweight and he weaned off at an impressive 1090lbs. We have a good selection of true performance bulls this year and Cinch is one of the really good ones.

MRL WALTER 47H
S: NUG DARK HORSE 131L
SKORS LADY FREDA 27G

X-T BLACK TERMINATOR 46C
D: NUG MYLA 111H
SUN STAR PAM 8F

MRL BENDER 25F
FLYF PEGS POCAHONTAS 720E
SKORS BLACK ENTICER 4W
SKORS LADY FREDA 55B
WHEATLAND TERMINATOR 202Z
X-T BLACK HEROINE 86U
HART STATE OF WAR 056C
SUN STAR PAM 102Y

78**NUG MR 26N**HOMO POLLED • HETERO BLACK PB
NUG 26N • BPG1510333 • JAN.7.2025

BW	Sep5	Jan2	365 Adj
97	1006	1410	1425

CE	BW	WW	YW	MILK	MCE	MWWT
5.6	3.2	89.5	135.6	24.8	5.8	69.6



Another big performance style bull who is sired by the exciting Dark Horse bull. 26N is a nice combination of calving ease and power. His mother is a good functional Shear Force cow that always seems to earn her keep with production and soundness. We are sure proud of this group of bulls as they would be our highest average weaning weight group to date. 26N weaned off at 1006lbs and hasn't slowed down since. A nice stylish bull backed by a nice cow that will sire a nice group of calves regardless of their sex.

MRL WALTER 47H
S: NUG DARK HORSE 131L
SKORS LADY FREDA 27G

HOOKS SHEAR FORCE 38K
D: NUG MAMOSIA 27F
NUG DELLA 654D

MRL BENDER 25F
FLYF PEGS POCAHONTAS 720E
SKORS BLACK ENTICER 4W
SKORS LADY FREDA 55B
NICHOLS LEGACY G151
C&D TRACY
SPRINGCREEK OLYMPIAN 66A
3D MISS BLK JOSIE 505W



Darkhorse- sire of lot 77+78

79 NUG DELUX 75N
 HOMO POLLED • HETERO BLACK PB
 NUG 75N • BPG1513981 • JAN.17.2025

BW	Sep5	Jan2	365 Adj
86	862	1240	1305

CE	BW	WW	YW	MILK	MCE	MWWT
12.2	-0.6	82.9	121.0	19.9	5.7	61.4



Here is a prospect for the heifer pen. He is moderate boned and nice headed with smooth shoulders and really good feet. His mother is a nice moderate framed cow with a really good udder that goes back to the Mollydooker cow. Sired by the High Roller bull that has worked really well in our heifer pen. This guy should calve like a dream and leave you highly marketable calves regardless of their sex.



CNR Mollydooker- grand dam

HSF HIGH ROLLER 12T
S: SKORS HIGH ROLLER 34C
 SKORS JEWEL 226A

TJ 57J THE GAMBLER
 HSF RED FORTUNES SIS 33
 TNT TANKER U263
 SKORS MS JEWEL 115W

MADER WALK THIS WAY 224B
D: NUG MISS MOLLY 47K BCM
 CRN STEP UP 34C

NCB COBRA 47Y
 MADER P IRON SUGAR 7X
 WS A STEP UP X27
 CRN STEELS LASS 9013W

80 NUG ROLLER 96N
 HOMO POLLED • HOMO BLACK PB
 NUG 96N • BPG1516064 • JAN.22.2025

BW	Sep5	Jan2	365 Adj
86	895	1235	1273

CE	BW	WW	YW	MILK	MCE	MWWT
12.7	0.1	74.8	108.2	30.5	5.6	67.9



A pretty cool calving ease pedigree with a different twist on the bottom side. This guy is moderate framed, moderate boned and stout with lots of character and eye appeal. High Roller has been used successfully in our heifer pen and we intentionally bred this calving ease cow this way to make a calving ease bull. It's nice when plans work out once in a while. 264D is a black Imax daughter that was the first calf out of an awesome Captain Morgan daughter that was in the donor pen and unfortunately we lost her way too young. Calving ease and performance with an outcross pedigree and lots of style.

HSF HIGH ROLLER 12T
S: SKORS HIGH ROLLER 34C
 SKORS JEWEL 226A

TJ 57J THE GAMBLER
 HSF RED FORTUNES SIS 33
 TNT TANKER U263
 SKORS MS JEWEL 115W

ANCHOR D IMAX 250Y
D: NUG KAREN 264D
 NUG MORGAN 401B

HEMR SAMURAI 7S
 DORA LEE ELEXIS
 SVS CAPTAIN MORGAN 11Z
 NUG JENN 2X

81 NUG SONIC 117N
 HOMO POLLED • HETERO BLACK PB
 NUG 117N • BPG1516123 • FEB.2.2025

BW	Sep5	Jan2	365 Adj
94	960	1335	1437

CE	BW	WW	YW	MILK	MCE	MWWT
6.4	3.9	78.8	117.1	29.7	3.0	69.1



Here is a long bodied, sound made, rancher type bull that's thick and smooth made. His sire is Tycoon son that we purchased from Robb Farms a few years ago. He is one of the most impressive mature bulls that we've ever had. His calved his first few daughters this year and they have beautiful udders and are going to make awesome cows. His mother is a C model cow that has been very productive for us. 117N is a fool proof option to add pounds and presence to his calf crop and leave a really nice bunch of daughters.



Leader- sire

SVS TYCOON 841F
S: LRX TYCOON 36K
 LRX MS BLACK 155B

SVS BROOKS 669D
 SVS RED ANNIE 411B
 HARVIE JDF WALLBANGER111X
 LRX MS 75X

TH BLACK EDITION 8R
D: NUG ROZZANNA 562C
 NUG TRISA 126A

TNT DYNAMITE BLACK L137
 BBN MS BLACK LADY 28H
 SKORS ENTICER 186W
 NUG TIKA 784T

82**NUG CERTIFIED 114N**
HOMO POLLED • HETERO BLACK PB
NUG 114N • BPG1516116 • JAN.30.2025

BW	Sep5	Jan2	365 Adj
115	992	1440	1530

CE	BW	WW	YW	MILK	MCE	MWWT
-1.4	7.4	104.3	151.3	29.4	-0.2	81.6



A big stretchy, long, powerful No Limits son here that has a lot of character to him. He has a nice blaze face and really good feet. He goes back to the really good Dream 103W cow on the bottom side who was a really productive donor cow for us. His mother is a massive, big topped, nice uddered cow that is often picked out by visitors. The No Limits calves have some extra frame and performance and his heifers have incredible teat size and placement. This

is a bull that should leave an awesome set of daughters with the money stripe.



NUG 49G - dam of lot 82



No Limits - sire of lot 82

R PLUS YUMA 9087G
S: RF NO LIMITS 1112J
RUST MISS 6217D

R PLUS 5015C
MISS R PLUS 3007A
WS STEPPING STONE B44
TNT MISS W31

MRL VELOCITY 35E
D: NUG DARLA 49G
SKORS DREAM 103W

MRL MISSILE 138C
MRL MISS 715W
CNS DREAM ON L186
SKORS MS FULLBACK 236T

83**NUG TUXEDO 142N**
HOMO POLLED • HOMO BLACK PB
NUG 142N • BPG1517726 • FEB.13.2025

BW	Sep5	Jan2	365 Adj
96	922	1340	1509

CE	BW	WW	YW	MILK	MCE	MWWT
3.9	3.8	91.7	137.9	26.7	2.2	72.6



Here is a little younger Fleetwood bull that does a lot of things right. He is smooth made and long with an attractive look and really good feet. This is a bull that has a stacked pedigree, Captain Morgan, 186F, 4W and Fleetwood. The daughter from this guy will be extreme high quality. We have a nice group of 186F daughters and they are attractive made, big bodied cows with

really good udders. This guy weaned of heavy and posted a really impressive adjusted yearling weight at 1509lbs.



Fleetwood - sire of lot 83+84

CMS SOCHI 307A
S: R PLUS FLEETWOOD 1012J
MISS R PLUS 9495G

DRAKE POKER FACE 2X
YR BLK PRIMADONNA 930W
R PLUS 7141E
MISS R PLUS 4005B

SKORS BLACK ENTICER 186F
D: NUG MISS ENTICER 120K
NUG LACEY 59E

SKORS BLACK ENTICER 4W
SKORS LADY FREDA 55B
SVS CAPTAIN MORGAN 11Z
D BAR C BLK LACE 8119U

84**NUG PARDNER 140N**
HOMO POLLED • HETERO BLACK PB
NUG 140N • BPRS1531449 • JAN.11.2025

BW	Sep5	Jan2	365 Adj
85	860	1240	1293

CE	BW	WW	YW	MILK	MCE	MWWT
13.3	-1.0	76.8	121.3	22.1	4.9	60.5



A really intriguing calving ease bull that would be a prospect for the heifer pen. With an 85lb birth weight and being in the top 3% and 10% of the breed in birthweight and calving ease respectively. His mother is a purebred Angus cow that's a daughter of the SAV Duke Girl and Renovation. He is moderate framed, modest boned, smooth shoulder and nice headed. He should calve like a dream and leave a pretty wicked set of daughters. The Fleetwood daughters are high quality and you add that Reno cow in there, there is no guess work with this guy.

CMS SOCHI 307A
S: R PLUS FLEETWOOD 1012J
MISS R PLUS 9495G

DRAKE POKER FACE 2X
YR BLK PRIMADONNA 930W
R PLUS 7141E
MISS R PLUS 4005B

S A V RENOVATION 682Z
D: MAXWELL EMERALD 275J
S A V DUKE GIRL 8161

S A V RENOWN 3439
S A V MADAME PRIDE 0151
S A V NET WORTH 4200
A C DUKE GIRL 57

85**MAXWELL ALPINE 53N**HOMO POLLED PB
NUG 53N • 2449544 • JAN.14.2025

BW	Sep5	Jan2	365 Adj
86	940	1240	1253

CE	BW	WW	YW	MILK	MCE	MWWT
3.5	4.1	68.0	115.0	26.0	3.5	30.0



Here is the result of some embryos that we purchased out of one of the nicest Angus cows that you can find. When we buy these embryos our hope is usually to get heifer calves to build our Angus program a little bit but our loss is your gain. 53N is moderate framed with a pile of look and style to him. He's low set and sound made. The Glacier sired cattle have been in high demand and for good reason as they are very high quality. Our Angus division is small this year but we feel they are very good.

S A V RENOWN 3439
S: COLEMAN GLACIER 041
COLEMAN DONNA 439

S A V HARVESTOR 0338
D: S A V EMBLYNETTE 4223
S A V EMBLYNETTE 1786

RITO 707 OF IDEAL 3407
S A V BLACKCAP MAY 4136
GDAR GAME DAY 449
COLEMAN DONNA 714
S A V HERITAGE 6295
S A V EMBLYNETTE 7749
S A V BISMARCK 5682
S A V EMBLYNETTE 1181



SAV Emblynette 4223 - dam



Coleman Glacier - sire

86**MAXWELL VIKING 57N**HOMO POLLED PB
NUG 57N • 2449549 • JAN.14.2025

BW	Sep5	Jan2	365 Adj
95	1085	1535	1564

CE	BW	WW	YW	MILK	MCE	MWWT
3.5	2.8	71.0	117	25.0	6.5	63.0

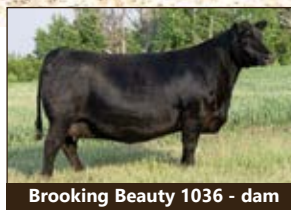


57N is a bigger framed, stout, long bodied bull that has that really nice skull shape and herd bull character. He posted really impressive weaning any yearling weights at 1080 and 1564 respectively. His dam, 1036, is a cow that we purchased with Canadian Donors and Rancier's a few years ago. She was our pick of the Brooking offering that year and is a direct daughter of the great 6051 cow who is the dam of Emerald. Being sired by Radville who is a 333 son is a real added bonus. If you can get your hands on a bull that combines such high quality, productive cows that has as much power, performance and presence as this guy, you can't go wrong.

S A V BISMARCK 5682
S: BROOKING RADVILLE 2208
BROOKING BEAUTY 333

S A V AMERICA 8018
D: BROOKING BEAUTY 1036
BROOKING BEAUTY 6051

G A R GRID MAKER
S A V ABIGALE 0451
S A V HARVESTOR 0338
TLA BEAUTY 6R
S A V PRESIDENT 6847
S A V MADAME PRIDE 0075
BROOKING BANK NOTE 4040
SOO LINE BEAUTY 1027



Brooking Beauty 1036 - dam



Brooking Radville - sire

Garth, Angela, Kade and Abby Rancier
 Cell: (780) 385-5313
 garth@rancierfarms.com
 www.rancierfarms.com

Directions: From Killam, 2 miles west on
 HWY 13, 4 miles north on RGE RD 141

Watch our website, Facebook, and
 Youtube pages for updated
 information and videos.



*All bulls have a high density DNA genomic test. This ensures they are what the pedigree says they are. This also increases the accuracy of his EPD's the equivalent of a full calf crop for many traits.

87

RF DISRUPTOR 574

HOMO BLACK • HOMO POLLED 1/2
 GNR 74N • BPRS1519903 • JAN.6.2025

BW	Sep17	205Adj	365Adj
98	1035	854	1534

CE	BW	WW	YW	MILK	MCE	MWWT
5.0	4.3	100.8	167.5	21.9	4.2	72.3



BROOKING EMERALD 9179
S: RF LIT UP 357
 LFE BA JENNIFER 29J

WFL WESTCOTT 24C
D: RF FLIRTIN 7103E
 RF NOT JUST A FLIRT 404B

S A V RENOVATION 6822
 BROOKING BEAUTY 6051
 S A V AJAX 8885
 LFE BA JENNIFER 10C
 TNT 90 PROOF Z401
 WFL SWEET LICIOUS 1044X
 SVS CAPTAIN MORGAN 11Z
 RF CERTAINLY FLIRTIN 202Z



RF Flirt 850F
 Full sister to the dam of lot 87



RF Lit Up 357
 Sire of lots 87-93

If you've followed our program for the last decade you know that we've been mating some of our favourite and best Simmental and Angus cows to make halfblood SimAngus bulls. We've sold some exciting bulls but as an individual, Disruptor 574, might be the most exciting halfblood we've ever produced. His sire, RF Lit Up 357, was the \$190,000 high seller two years ago to Duff Cattle Co. in Oklahoma and he has bred extremely consistently and exactly how we hoped. 574 carries the same cocky, upheaded, cool look as his sire and the presence and soundness that you don't often find in a big bodied, square hiped, performance bull. You don't find too many cows that are as consistent of a producer as his dam, 7103E, either. A son, RF Bloodline 242K, was a high selling halfblood 3 years ago to Labatte and Oberle and has turned into a great sire for them and we kept a little semen and have some outstanding daughters that just calved this year. Two other sons of 7103E have sold to 777 Cattle & the Bygrove family and Mike Fawcett. A two year old maternal sister to Disruptor 574 just calved and if you come for a tour make sure you see her; she is a favourite in the two year old pen. 574 was 1035 lbs on Sept 17 and posted an adj yw of 1534 lbs and as a bonus he is homo black and homo polled!

88**RF LIT 571**HETERO BLACK • HOMO POLLED 1/2
GNR 71N • BPRS1519900 • JAN.6.2025

BW	Sep 17	205Adj	365 Adj
101	1085	894	1500

CE	BW	WW	YW	MILK	MCE	MWWT
2.3	5.5	101.7	166.9	17.0	2.8	67.9



571 is another halfblood Lit Up son and a 3/4 brother to our lead off halfblood bull, 574. He and his brother, 574, have been peas in a pod with the same big hip, same cocky presence, and same added length and extra docility. His dam, 739E, has also been a no miss cow and this is her third son to sell through the bull sale with the first two selling to T8 Ranch and Lone Butte Ranching. Three more daughters have been retained in the herd and are all great uddered, productive cows. 571 is exactly what we are trying to accomplish with our halfblood program and the consistency of breeding like kinds on phenotype not only shines thru on this generation but on the next as well. As an individual he is no slouch either with a Sept 17 weight of 1085 lbs and continuing on to 1500 lb adj yw. He's also hetero black, a bonus for those looking for a bit of an outcross on the red side. Take your pick between these two 3/4 brothers.

BROOKING EMERALD 9179
S: **RF LIT UP 357**
LFE BA JENNIFER 29J

WFL WESTCOTT 24C
D: **RF FLIRT 739E**
RF CRIMSON FLIRT 12X

S A V RENOVATION 6822
BROOKING BEAUTY 6051
S A V AJAX 8885
LFE BA JENNIFER 10C
TNT 90 PROOF Z401
WFL SWEET LICIOUS 1044X
KENCO/MF POWERLINE 204L
CHUB'S FLIRT 6P



RF Flirt 133J
Maternal sister to lot 88

89**RF LIGHTS OUT 581**HETERO BLACK • HOMO POLLED 1/2
KR 81N • BPRS1519911 • JAN.8.2025

BW	Sep 17	205Adj	365 Adj
92	920	766	1558

CE	BW	WW	YW	MILK	MCE	MWWT
10.5	1.5	83.7	141.5	14.8	4.5	56.7



For 25 years we've been working on building a cow herd as consistent as we can and when you find a sire that breeds as consistent as Lit Up did in his first calf crop it's even more exciting to us. 581 is a big middled, heavy haired, nice headed, proud fronted bull. His dam was showed successfully by the kids as a bred and has turned into a very productive donor cow. 581 is her natural calf and other sons have sold to T8 Ranch and Ken & Brenda Martin. Two daughters are retained in the herd and another sold thru Friday Night Lights to Black River Farms in Ontario. With just a 92 lb bw and a mid Sept weight of 920 lbs and a 1558 Adj yw, he combines real performance with a lot of maternal value.

BROOKING EMERALD 9179
S: **RF LIT UP 357**
LFE BA JENNIFER 29J

RF CAPACITY 742E
D: **RF MOLLYDOOKER 090H**
CRN STEP UP 34C

S A V RENOVATION 6822
BROOKING BEAUTY 6051
S A V AJAX 8885
LFE BA JENNIFER 10C
WFL WESTCOTT 24C
RF FAMOUS 409B
WS A STEP UP X27
CRN STEELS LASS 9013W



RF Mollydooker 090H
Dam of lot 89

90**RF LIT UP 5111**HETERO BLACK • HOMO POLLED 1/2
GNR 111N • BPRS1519927 • JAN.12.2025

BW	Sep 17	205Adj	365 Adj
95	1000	843	1523

CE	BW	WW	YW	MILK	MCE	MWWT
7.0	4.1	97.5	166.3	19.6	5.7	68.4



Some cattle are structurally built to hold their head high and proud. We love those cattle! It's often not easy to find it in high performance cattle and there isn't an EPD for "presence" or "look" but it definitely pays dividends when you're selling a pen of heifer calves, bred heifers or cows. 5111 truly speaks to the consistency of the Lit Up progeny in terms of phenotype, soundness, muscle and performance. 5111 is another big middled, stylish, Lit Up son that is packed with real muscle and a herd bull presence. His dam, 962G, is a full sister to the \$130,000 Supercharged and she has 4 daughters retained in our herd that are very productive, great uddered females. Another bull that is no slouch when it comes to performance too. A lot of maternal value along with real world performance, keep all his daughters in your herd and enjoy the paycheck when the sons push down the scale in the fall.

RF Certainly Flirtin 256K
Maternal sister to lot 90RF Certainly Flirtin 962G
Dam of lot 90

BROOKING EMERALD 9179
S: RF LIT UP 357
 LFE BA JENNIFER 29J

RF CAPACITY 742E
D: RF CERTAINLY FLIRTIN 962G
 RF CERTAINLY FLIRTIN 202Z

S A V RENOVATION 6822
 BROOKING BEAUTY 6051
 S A V AJAX 8885
 LFE BA JENNIFER 10C
 WFL WESTCOTT 24C
 RF FAMOUS 409B
 WHEATLAND STOUT 930W
 RF FLIRTIN FOR CERTIN 37U

91**RF LIT UP 5113**BLACK POLLED 1/2
GNR 113N • BPRS1519928 • JAN.13.2025

BW	Sep 17	205Adj	365 Adj
81	910	776	1419

CE	BW	WW	YW	MILK	MCE	MWWT
10.2	1.3	85.7	141.7	14.1	7.6	57.0



Another Lit Up son with the same look as his brothers. Upheaded, deep bodied, great haired and square hipped. His dam is a big bodied, great uddered Captain Black daughter that has stood the test of time calving in the first two weeks of January every year until the age of 10. Longevity is bred into this one with a lot of cows in his pedigree that have stuck around into a double digit age.

BROOKING EMERALD 9179
S: RF LIT UP 357
 LFE BA JENNIFER 29J

RF CAPTAIN BLACK 430B
D: RF COVERGIRL 635D
 DEEG MS COVER GIRL 25Y

S A V RENOVATION 6822
 BROOKING BEAUTY 6051
 S A V AJAX 8885
 LFE BA JENNIFER 10C
 SVS CAPTAIN MORGAN 11Z
 TLG FLIRTIN WITH YOU
 RF CHORE BOY 10W
 RDD MS 92W

92

RF LIT UP 591

HOMO BLACK • HOMO POLLED 1/2
GNR 91N • BPRS1519917 • JAN.10.2025

BW	Sep17	205Adj	365Adj
96	1055	883	1526

CE	BW	WW	YW	MILK	MCE	MWWT
3.7	2.0	93.1	154.3	18.4	3.9	64.9



591 is a long bodied, homo black Lit Up son that has extra pounds in length. His dam is another direct 202Z daughter. 202Z had a big influence on our herd and had 88 progeny registered to her in Canada and many more in the USA and Australia. We have well over 100 females in our herd that have 202Z in their pedigree as either their dam, grand dam and even great grand dam in some cases now. This is only the second son that 046H has had with the first selling to the Lidberg family. Another Lit Up son with extra masculinity, crest and length.



RF Certainly Flirtin 046H
Dam of lot 92

BROOKING EMERALD 9179
S: RF LIT UP 357
LFE BA JENNIFER 29J

S A V RENOVATION 6822
BROOKING BEAUTY 6051
S A V AJAX 8885
LFE BA JENNIFER 10C

TJSC BOONE PICKENS 46C
D: RF CERTAINLY FLIRTIN 046H
RF CERTAINLY FLIRTIN 202Z

REMINGTON LOCK N LOAD 54U
TJSC KNOCKOUT 121Y
WHEATLAND STOUT 930W
RF FLIRTIN FOR CERTIN 37U

93

RF LIT UP 593

HOMO BLACK • HOMO POLLED 1/2
GNR 93N • BPRS1519919 • JAN.10.2025

BW	Sep17	205Adj	365Adj
98	1010	846	1504

CE	BW	WW	YW	MILK	MCE	MWWT
4.1	3.4	99.0	162.1	14.4	4.6	63.9



593 is a 3/4 brother to 591 and another Lit Up son out of a 202Z daughter. We can't explain how influential 202Z has been and how prominent her daughters and grand daughters are in our herd. 593 has a 2 year old maternal sister that just calved and is a moderate, beautiful uddered cow. 593 is a bull that we like better that his picture so wait for his video or better yet, come and see him and his sister at the farm before the bull sale. Extra performance in this one too and EPD's to match the real numbers too.



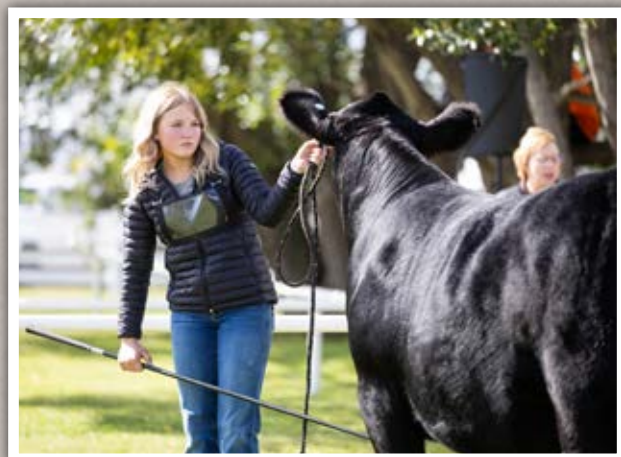
RF Certainly Flirtin 202Z
Maternal Grand Dam of lot 92&93

BROOKING EMERALD 9179
S: RF LIT UP 357
LFE BA JENNIFER 29J

S A V RENOVATION 6822
BROOKING BEAUTY 6051
S A V AJAX 8885
LFE BA JENNIFER 10C

NGDB STRUCTURE 34D
D: RF CERTAINLY FLIRTIN 069H
RF CERTAINLY FLIRTIN 202Z

NCB COBRA 47Y
NGDB LOUISE 411 B
WHEATLAND STOUT 930W
RF FLIRTIN FOR CERTIN 37U



94

RF FIRST ANSWER 506
HETERO BLACK • HOMO POLLED 1/2
GNR 506M • BPRS1505546 • DEC.16.2024

BW	Sep 17	205Adj	365 Adj
84	1135	966	1534

CE	BW	WW	YW	MILK	MCE	MWWT
9.1	1.2	99.9	160.3	26.9	7.0	76.9

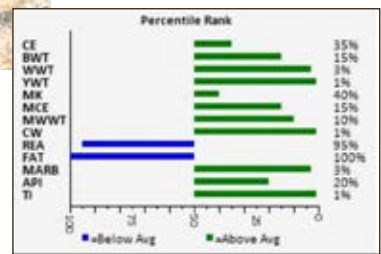


First Answer 506 isn't your typical bull out of a first calf heifer. 506 came early and unassisted at 84 lbs and by the middle of September he was the second heaviest bull in the whole pen at 1135 lbs! His dam is a hard working No Limits daughter that did a whale of a job on her first calf. She has already calved again this year, a week early, with a Lit Up bull calf that has a herd bull look just like his brother did at that age. His granddam also has an outstanding Lit Up son in the sale and has been an absolute no miss cow. Longevity and productive cow power is locked in on this one. His genomic data matches his actual numbers being in the top 15% of the breed for bw and top 3% for ww, top 2% for yw and above average for 11 traits!

S A V FINAL ANSWER 0035
S: LFE BEST ANSWER 800H
LFE BA CHINOOK 627F

RF NO LIMITS 1112J
D: RF CERTAINLY FLIRTIN 343
RF CERTAINLY FLIRTIN 962G

SITZ TRAVELER 8180
S A V EMULOUS 8145
COLEMAN BRAVO 6313
LFE BA CHINOOK 2183D
R PLUS YUMA 9087G
RUST MISS 6217D
RF CAPACITY 742E
RF CERTAINLY FLIRTIN 202Z



95

RF DENSITY 5212
HOMO BLACK • HOMO POLLED 1/2
GNR 212N • BPTRS1518004 • JAN.22.2025

BW	Sep 17	205Adj	365 Adj
103	880	771	1272

CE	BW	WW	YW	MILK	MCE	MWWT
9.5	2.7	80.2	128.5	24.8	0.1	64.9

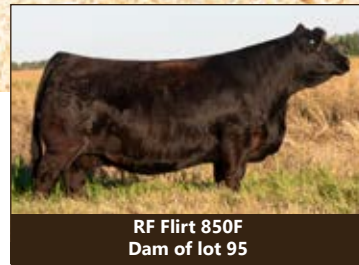


Not going to lie, 5212 was supposed to be a heifer and you should see the 8 flush mate sisters that are in our replacement pen. I guarantee you will hear a lot from them in the future and if you come for a tour, they are easy to find in the pen because they're all peas in a pod and look like brood cows in the making. The consistency and the maternal power in this pedigree is locked in. 5212's dam, 850F is most well known as the dam of RF Boomer, who has done an awesome job on his first couple calf crops, highlighted by the \$170,000 daughter at Friday Night Lights. 850F is the most massive bodied cow on the farm and stands on an awesome foot and has a great udder. You don't have to dig too deep into the Angus world to understand how legendary of a cow maker Density is and continues to be 22 years after he was born. If you are looking for a bull to build a cow herd around, check out Density 5212.

S A V 8180 TRAVELER 004
S: S A V 004 DENSITY 4336
S A V MAY 7238

WFL WESTCOTT 24C
D: RF FLIRT 850F
RF NOT JUST A FLIRT 404B

SITZ TRAVELER 8180
BOYD FOREVER LADY 8003
LEACHMAN RIGHT TIME
S A R PROSPECTOR MAY 9124
TNT 90 PROOF Z401
WFL SWEET LICIOUS 1044X
SVS CAPTAIN MORGAN 11Z
RF CERTAINLY FLIRTIN 202Z



96

RF EYES ON YOU 594

HETERO BLACK • HOMO POLLED 3/4
GNR 94N • BPRS1519920 • JAN.10.2025

BW	Sep 17	205Adj	365 Adj
99	1020	865	1620

CE	BW	WW	YW	MILK	MCE	MWWT
7.1	3.8	101.1	163.7	19.0	2.8	69.6



594 is a high performance bull with extra size, length and pounds from the first calf crop by the \$100,000 RF Intensity that sold to W2 Land & Cattle and Canadian Sires. His real data matches his EPD's, breaking the 1000 lb barrier by mid September and continuing on to post a 1620 lb adjw. In terms of maternal power he is backed by generations of cow power on both sides of his pedigree. A full sister to Intensity and Intense, RF Scream 3141, was a 5 times Champion this past fall as well as Supreme Champion Female at Farmfair International. Two thirds interest in his maternal granddam, RF Certainly Flirtin 956G, was purchased by Double Bar D for \$110,000 in the Jenna/Flirt event sale and she also has an exciting son in this years bull sale. His dam has had 3 bull calves in a row and this is the third to sell in the bull sale with the first two selling to Sjogren Farms and Larry Storbakken. Extra "presence" and "look" isn't usually easy to find in a high performance package but it does pay dividends whether you're selling a pen of heifer calves, bred heifers or sons.



RF Certainly Flirtin 1115J
Dam of lot 96



RF Certainly Flirtin 956G
Maternal Granddam of lot 96

RF CALIBER 014G
S: RF INTENSITY 3142
RF SCREAM 974G

NGDB STRUCTURE 34D
RF NOT JUST A FLIRT 404B
RF CAPACITY 742E
RF SCREAM 215Z
V A R DISCOVERY 2240
PF 5682 HENRIETTA PRIDE 0533
RF CAPACITY 742E
RF CERTAINLY FLIRTIN 202Z

PF OKLAHOMA 6625
D: RF CERTAINLY FLIRTIN 1115J
RF CERTAINLY FLIRTIN 956G

97

RF EAGLE EYE 584

HOMO BLACK • HOMO POLLED 3/4
GNR 84N • BPRS1519913 • JAN.8.2025

BW	Sep 17	205Adj	365 Adj
104	1065	885	1439

CE	BW	WW	YW	MILK	MCE	MWWT
3.6	4.3	89.8	133.5	21.9	3.3	66.8



584 is another big, soggy, great haired performance bull packed with maternal power, real world pounds heavy power and a set of numbers on paper to match. His dam always does an awesome job and she hit another home run with 584. Sons have sold to Woywitka Farms, Leedale Farming, and last year to Small Ranch. One daughter sold to Sunny Valley Simmentals at Friday Night Lights and another is retained in our herd. Generations of great donor cows line 584's pedigree from both the Simmental and Angus breeds which truly locks in the maternal cow power. Bulls like 584 produce calves that weigh more and pay more and daughters to build a herd around.



Rust Miss Rose 7305E
Dam of lot 97



RF Intensity 3142
Sire of lot 96&97

RF CALIBER 014G
S: RF INTENSITY 3142
RF SCREAM 974G

NGDB STRUCTURE 34D
RF NOT JUST A FLIRT 404B
RF CAPACITY 742E
RF SCREAM 215Z
HARVIE JDF WALLBANGER111X
SUNNYVALLEY BLK JENNA 88U
SOO LINE MOTIVE 9016
E A ROSE 918

SVS CAPTAIN MORGAN 11Z
D: RUST MISS ROSE 7305E
SOO LINE ROSE 1019

98**RF/MCC INTENSE 560**
HOMO BLACK • HOMO POLLED 3/4
GNR 60N • BPRS1520330 • JAN.4.2025

BW	Sep 17	205Adj	365 Adj
97	1020	870	1385

CE	BW	WW	YW	MILK	MCE	MWWT
2.3	6.4	103.5	148.5	18.6	2.7	70.4



Intense 560 is a solid made, big bodied, awesome haired bull to lead off the first group of sons by the \$70,000 RF Intense that sold to Muirhead Cattle Co and Grassroots Ranch. He is out of a beautiful uddered second calver that we purchased with the Muirhead Family at Friday Night Lights. He had explosive growth to weaning also breaking the 1000 lb mark by mid September. His maternal sister was sold at the Country Classic sale last fall for \$19,000 and his dam just calved with her third calf and its a heifer calf by Intense that already has a great look.

RF CALIBER 014G
S: RF INTENSE 3144
RF SCREAM 974G

ANDERSON RENOWN 0036
D: DEEG MS JAYDE 134K
DEEG MS 91H

NGDB STRUCTURE 34D
RF NOT JUST A FLIRT 404B
RF CAPACITY 742E
RF SCREAM 215Z

S A V RENOWN 3439
SOO LINE TIBBIE 1009
RF CAPACITY 742E
DEEG MS 49B



Deeg Ms Jayde 134K
Dam of lot 98



RF Intense 3144
Sire of lots 98-104

99**RF INTENSE 589**
HOMO BLACK • HOMO POLLED 3/4
GNR 89N • BPRS1519915 • JAN.9.2025

BW	Sep 17	205Adj	365 Adj
90	930	777	1337

CE	BW	WW	YW	MILK	MCE	MWWT
6.6	3.2	89.6	140.8	15.7	4.5	60.5



RF Intense 589 is a proud fronted, nice headed, homo black Intense son with loads of maternal power. His dam is an outstanding half-blood female with a near perfect udder at 7 years of age. She produced a high selling percentage bull two years ago that sold for Labatte and Oberle for \$50,000 and a full sister to him was Abby's show cow that earned her a few banners, most notably, being crowned Grand Champion percentage female at Agribition as a heifer calf. If you're looking for a homo black bull to build a cow herd around without sacrificing performance on his sons, check out 589.

RF CALIBER 014G
S: RF INTENSE 3144
RF SCREAM 974G

S A V RENOVATION 6822
D: RF AMERICANA 997G
TCCO MISS TABLELAND 302A

NGDB STRUCTURE 34D
RF NOT JUST A FLIRT 404B
RF CAPACITY 742E
RF SCREAM 215Z

S A V RENOWN 3439
S A V MADAME PRIDE 0151
WHEATLAND PREDATOR 922W
TCCO MISS TABLELAND 114Y



RF Americana 997G
Dam of lot 99



RF Americana 274K
Maternal sister to lot 99

100

RF BUFF 5144

HOMO BLACK • HOMO POLLED PB
GNR 144N • BPTG1510414 • FEB.2.2025

BW	Sep 17	205Adj	365 Adj
98ivf	935	887	1538



CE	BW	WW	YW	MILK	MCE	MWWT
6.4	5.5	99.3	152.6	17.1	4.1	66.8

101

RF BURLY 5148

HOMO BLACK • HOMO POLLED PB
GNR 148N • BPTG1510415 • FEB.3.2025

BW	Sep 17	205Adj	365 Adj
101ivf	865	827	1694



CE	BW	WW	YW	MILK	MCE	MWWT
4.9	6.9	103.3	166.4	17.1	3.9	68.8

RF CALIBER 014G
S: RF INTENSE 3144
 RF SCREAM 974G

SVS BETTS 808F
D: RF CERTAINLY FLIRTIN 250K
 RF CERTAINLY FLIRTIN 202Z

NGDB STRUCTURE 34D
 RF NOT JUST A FLIRT 404B
 RF CAPACITY 742E
 RF SCREAM 215Z

BGS/BM CAPTAIN SCREAM 63D
 WFL RED SAGE 506C
 WHEATLAND STOUT 930W
 RF FLIRTIN FOR CERTIN 37U

Our goal has always been to pack as many great cows, and especially top end donor cows, into a pedigree as we can. These five dense made, moderate framed, stout from front to back, group of February born, herd builder, flush brothers are exactly that. Their dam was a past Friday Night Lights high seller to Westman Farms and this group of flush brothers is already proving how potent of a breeder she is. Their sire, Intense, combines some of the most exciting donor cows from our program in recent years and both he and his full brother, Intensity, will have a major impact on our program and the breeders that use them. Intense's full sister was a many times breed champion and also came home with 2 Supreme champion banners. A maternal sister to Intense, RF Scream 5117, was the Friday Night Lights high seller to Canadian Donors at \$170,000. The females that back this group of flush brothers is second to none and we are excited about their future. Take your pick of homo or hetero black but make sure you keep the daughters and build a cow herd around this group of brothers.

102 RF BALANCE 5150
 HETERO BLACK • HOMO POLLED PB
 GNR 150N • BPTG1517979 • FEB.3.2025

BW	Sep 17	205Adj	365 Adj
93IVF	830	794	1362



CE	BW	WW	YW	MILK	MCE	MWWT
3.4	5.0	97.8	154.5	17.1	2.8	66.0

103 RF BOLD 5152
 HOMO BLACK • HOMO POLLED PB
 GNR 152N • BPTG1517980 • FEB.3.2025

BW	Sep 17	205Adj	365 Adj
106IVF	960	914	1407



CE	BW	WW	YW	MILK	MCE	MWWT
3.0	5.0	96.0	145.8	17.1	3.9	65.1

104 RF BULK 5153
 HETERO BLACK • HOMO POLLED PB
 GNR 153N • BPTG1517982 • FEB.3.2025

BW	Sep 17	205Adj	365 Adj
104IVF	1030	977	1575



CE	BW	WW	YW	MILK	MCE	MWWT
4.5	4.6	102.4	157.3	17.1	3.3	68.3



RF Certainly Flirtin 250K
 Dam of lots 100-104



RF Certainly Flirtin 202Z
 Maternal Grand Dam of lots 100-104

105**RF THUNDER 559**HOMO BLACK • HOMO POLLED PB
GNR 59N • BPG1519891 • JAN.4.2025

BW	Sep 17	205Adj	365 Adj
99	940	773	1363

CE	BW	WW	YW	MILK	MCE	MWWT
7.8	1.3	88.4	141.0	17.0	5.8	61.2



RF Thunder 559 is the lone direct Caliber son in our pen this year and has been a favourite all year. He's homo black and polled, awesome haired, super sound moving and flexible and has the typical proud Caliber front end. His dam is a big bodied, awesome uddered, female that is angular and feminine through her front end and is still big middled and wide hipped. A full brother to 559 sold to Kaelberer Simmentals in North Dakota and his first sons are features in their bull sale. Another son sold to Rocking Heart and a daughter is retained in our herd and is due with her first calf any day.

NGDB STRUCTURE 34D
S: **RF CALIBER 014G**
RF NOT JUST A FLIRT 404B

WHF LIMITLESS B011
D: **RF/CD ROSE 9130G**
RUST MISS ROSE 7305E

NCB COBRA 47Y
NGDB LOUISE 411 B
SVS CAPTAIN MORGAN 11Z
RF CERTAINLY FLIRTIN 202Z
JF MILESTONE 999W
WHF SIERRA 245S
SVS CAPTAIN MORGAN 11Z
SOO LINE ROSE 1019



RF Rose 9130G
Dam of lot 105

106**RF MAGNUM 552**HETERO BLACK • HOMO POLLED PB
GNR 52N • BPG1508394 • JAN.3.2025

BW	Sep 17	205Adj	365 Adj
94	985	817	1491

CE	BW	WW	YW	MILK	MCE	MWWT
5.8	2.7	80.2	129.2	22.7	1.8	62.8



RF Magnum 552 is a long bodied, stout made Magnum son in a smooth package with extra extension that started at just 94 lbs. His sire, RF Magnum 388, sold to Rust Mountain View Ranch in North Dakota and we were able to get a little semen before he went south. We used him to get the influence of his dam, 786E, that was as nice of a cow as you could make. A full sister to Magnum was a Friday Night Lights high seller at \$80,000 to Wallgren Farms and Double RN. 552's dam, 133J, has been an awesome producer with her first calf selling to Lewis Farms for \$31,000 in the Country Classic sale, second son sold to the very keen Ben Judd at Bristol View Farms in Quebec in last years bull sale and 552 is her third calf. She has a bit of a unique twist to her pedigree being sired by the outcross sire, RF Maximus, that sold to Labatte Simmentals and Clifford Land and Cattle.

RF CALIBER 014G
S: **RF MAGNUM 388**
RF FLIRT 786E

RF MAXIMUS 937G
D: **RF FLIRT 133J**
RF FLIRT 739E

NGDB STRUCTURE 34D
RF NOT JUST A FLIRT 404B
W/C HUSKER 750C
RF RED FLIRT 447B
S A V RENOVATION 6822
REMINGTON FLIRTIN WITHYOU
WFL WESTCOTT 24C
RF CRIMSON FLIRT 12X



RF Flirt 133J
Dam of lot 106

107**RF MAGNUM 5106**HETERO BLACK • HOMO POLLED PB
GNR 106N • BPG1519924 • JAN.12.2025

BW	Sep 17	205Adj	365 Adj
98	945	811	1507

CE	BW	WW	YW	MILK	MCE	MWWT
5.3	5.1	96.6	149.6	18.6	3.4	66.9



5106 is a big hipped, long bodied, stout topped bull that is backed by one of our favourite young cows. You know a red cow is pretty special if we're flushing her and that is where 162J ranks for us. She has as nice of an udder as you can make and she is a moderate framed cow with a huge rib and angular front end. She is always found on pasture tours, and not just because she's red. Even more importantly is she is extremely productive. A daughter of hers by Magnitude just had her first calf and is following in her dams footsteps with a beautiful udder. 162J is a female you will hear a lot more from in the future. Another bull that goes back to the legendary 202Z donor.

RF Flirt 162J
Dam of lot 107RF Flirt 786E
Paternal Granddam of lots 107& 108RF CALIBER 014G
S: RF MAGNUM 388
RF FLIRT 786EIPU BENTLEY 81F
D: RF FLIRT 162J
RF CERTAINLY FLIRTIN 202ZNGDB STRUCTURE 34D
RF NOT JUST A FLIRT 404B
W/C HUSKER 750C
RF RED FLIRT 447B
WHEATLAND BENTLEY 630D
CLAYHILL FANCY LUCA 39A
WHEATLAND STOUT 930W
RF FLIRTIN FOR CERTIN 37U**108****RF MAGNUM 5149**HOMO BLACK • HOMO POLLED PB
GNR 149N • BPG1519941 • FEB.3.2025

BW	Sep 17	205Adj	365 Adj
99	835	767	1305

CE	BW	WW	YW	MILK	MCE	MWWT
5.2	3.5	72.0	106.7	19.0	3.6	55.0



5149 is a homo black and polled, moderate framed, heavy haired, February born son of Magnum. His dam is a massive bodied, feminine fronted, Cobra daughter with an impeccable udder. A son of hers sold to Czech-mate Livestock and NA Bar Land & Cattle and is doing a great job there. We were hoping for a group of daughters from Magnum to increase the influence of his dam, 786E, but our loss is your gain. The daughters from 5149 should be great cows. Don't miss him on sale day because of his age.

Deeg Ms Arrow 66F
Dam of lot 108RF Flirt 398
Full sister to RF Magnum, sire of lot 106-108RF CALIBER 014G
S: RF MAGNUM 388
RF FLIRT 786ENCB COBRA 47Y
D: DEEG MS ARROW 66F
DEEG MS 130DNGDB STRUCTURE 34D
RF NOT JUST A FLIRT 404B
W/C HUSKER 750C
RF RED FLIRT 447B
LFE VIPER 455U
NCB MISS DREAM 22T
RRAR MOTIVE 14B
SPRINGCREEK ARROW 150B

109**RF BOOMER 5109**HETERO BLACK • HOMO POLLED 3/4
GNR 109N • BPRS1519926 • JAN.12.2025

BW	Sep 17	205Adj	365 Adj
94	1050	889	1569

CE	BW	WW	YW	MILK	MCE	MWWT
6.3	4.9	108.6	166.5	23.5	4.7	77.8



129B never misses and she's done it again. This will be the fifth bull that she has had in the bull sale and three daughters have sold in the Country Classic Sale. She hasn't ever changed and you'd never know she is 12 years old. She is still as nice uddered as she was at 3 years old. The other thing that hasn't changed is the big time job that she does on her calves. Boomer 5109 is a big time performance bull with just a 94 lb bw. He was one of the heavy weights mid September at 1050 lbs and didn't slow up posting a 1569lb adj yw. He's got extra stretch and pounds in length and the added chrome won't hurt anything when you sell a heavy-weight pen of steers sired by him!



Springcreek B Gold 129B
Dam of lot 109



RF Boomer 262K
Sire of lots 109-111

RF SHAKEDOWN 074H
S: RF BOOMER 262K
RF FLIRT 850F

NGDB STRUCTURE 34D
IPU MS. COWBOY CUT 135D
WFL WESTCOTT 24C
RF NOT JUST A FLIRT 404B
HF TIGER 5T
WALKERBRAE DR TIBBY 2W
KOP CROSBY 137W
SPRINGCREEK LINNE 2U

BAR-E-L ZENITH 1Z
D: SPRINGCREEK B GOLD 129B
SPRINGCREEK B GOLD 96Z

110**RF BOOMER 551**HETERO BLACK • HOMO POLLED PB
GNR 51N • BPG1508393 • JAN.3.2025

BW	Sep 17	205Adj	365 Adj
92	895	743	1341

CE	BW	WW	YW	MILK	MCE	MWWT
6.3	4.3	90.3	133.7	19.2	4.0	64.4



Another Boomer son with some extra length and sogginess and the perfect blaze along with a big square hip. His striking dam is a full sister to WJS Trailblazer that was a high seller for Johnson Ranching to Canadian Sires and Balamore. She is a deep bodied, beautiful fronted, great uddered cow that always does a great job and had a feature National son that sold to Woodhall & BVC last year. Another bull that can add some body, stoutness, hair and a little chrome to a calf crop.



RF Joys Elegance 747E
Maternal Granddam of lot 110

RF SHAKEDOWN 074H
S: RF BOOMER 262K
RF FLIRT 850F

NGDB STRUCTURE 34D
IPU MS. COWBOY CUT 135D
WFL WESTCOTT 24C
RF NOT JUST A FLIRT 404B
NCB COBRA 47Y
NGDB LOUISE 411 B
SVS CAPTAIN MORGAN 11Z
AJE/JF ANT JOYS ELEGANCE

NGDB STRUCTURE 34D
D: RF JOYS ELEGANCE 1175J
RF JOY'S ELEGANCE 747E

111**RF BOOM TOWN 565**HOMO BLACK • HOMO POLLED PB
GNR 65N • BPG1519895 • JAN.4.2025

BW	Sep17	205Adj	365Adj
102	1180	971	1704

CE	BW	WW	YW	MILK	MCE	MWWT
2.8	5.8	113.0	172.3	27.9	0.9	84.4



Boom Town 565 was the heavyweight of the whole calf crop at both weaning and yearling and if you saw his dam you'd never believe it. She is a moderate framed, beautiful uddered, awesome footed cow that always brings in a calf the same size as her year after year. 565 is the 6th bull that she's had sell in the sale with sons selling to Danval, Smalls, Lysengs, Forreitors and she is best known as the dam of the \$90,000 No Limits that sold to LA Ranch and Bar M in BC. No Limits

Rust Ms 6217D
Dam of lot 111

has been widely used in the breed being the 6th most used sire on the top 50 sires list for registrations in Canada. At 1180 lbs on Sept 17 and posting a 1704 lb adj yw, and GE EPD's in the top 1% for WW and YW you can bet he'll add pounds, size, and maybe a little chrome to a calf crop.

RF SHAKEDOWN 074H
S: RF BOOMER 262K
RF FLIRT 850FNGDB STRUCTURE 34D
IPU MS. COYBOY CUT 135D
WFL WESTCOTT 24C
RF NOT JUST A FLIRT 404BWS STEPPING STONE B44
D: RUST MISS 6217D
TNT MISS W31W/C LOCK DOWN 206Z
WS MS UPGRADE Z15
TNT KNOCK OUT R206
TNT MISS S82**112****RF BLACK WARRIOR 509**HOMO BLACK • HOMO POLLED 3/4
GNR 509M • BPRS1505550 • DEC.20.2024

BW	Sep17	205Adj	365Adj
86	940	824	1398

CE	BW	WW	YW	MILK	MCE	MWWT
10.3	1.5	86.6	136.4	27.5	6.6	70.8



Black Warrior 509 is your typical Warrior son, offering double digit calving ease and just a 1.4 bw epd to go along with his 86 lb bw and short gestation coming early. Also very typical for a Warrior son is his growth posting a mid September weight of 940 lbs and he ranks in the top 35% of the breed for ww and top 25% for yw! His dam is a beautiful first calving Capacity daughter that did a great job on her first try. As a bonus, the Warrior daughters are turning into beautiful young, great uddered, very productive cows too.

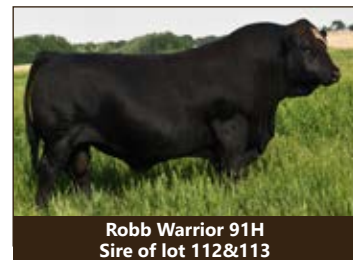
HART STATE OF WAR 056C
S: ROBB WARRIOR 91H
LRX BLACK 89FWELSH'S WARSAW 312Z
HART MISS 102A
SKORS HIGH ROLLER 34C
LRX BLACK 51DRF CAPACITY 742E
D: RF NANCY 3132
ANGUS/ANGUSWFL WESTCOTT 24C
RF FAMOUS 409B**113****RF SPARTAN 592**HETERO BLACK • HOMO POLLED 3/4
GNR 92N • BPRS1519918 • JAN.10.2025

BW	Sep17	205Adj	365Adj
93	940	856	1514

CE	BW	WW	YW	MILK	MCE	MWWT
8.7	2.2	96.2	149.1	30.5	6.8	78.6



Another soggy made Warrior son that offers a little extra performance and style. His first calf heifer dam did a great job on him with a mid September actual weight of 940 lbs and he didn't slow up through the fall with an adj yw of 1514 lbs ranking his ww and yw EPD's in the top 15% of the breed. A bit of an outcross pedigree for most as well.

Robb Warrior 91H
Sire of lot 112&113HART STATE OF WAR 056C
S: ROBB WARRIOR 91H
LRX BLACK 89FWELSH'S WARSAW 312Z
HART MISS 102A
SKORS HIGH ROLLER 34C
LRX BLACK 51DULTRA BANKNOTE 59H
D: RF RUBY 3146
RF RUBY 9132GBROOKING BANK NOTE 4040
TRIPLE ROSE CYPRESS
RF MERCHANT 481B
RF RUBY 715E

114

RF DOUBLES 523

HOMO BLACK • HOMO POLLED 3/4
GNR 523M • BPRS1505566 • DEC.25.2024

BW	Sep17	205Adj	365Adj
76	840	755	1193

CE	BW	WW	YW	MILK	MCE	MWWT
12.5	-0.3	69.6	97.2	21.2	7.0	56.0



A big time calving ease package here. Doubles offers an outcross pedigree for most lined with proven calving ease, generations deep. He started at just 76 lbs and short gestation out of his Warrior dam and his EPD's solidify that with a double digit calving ease and a negative bw ranking him in the top 10% and 5% of the breed for CE and BW. He comes with a cool look, great hair, sound made and a white snip to really catch your eye. Don't miss this calving ease option.

W/C DOUBLE DOWN 5014E
S: WHF/JS/CCS DOUBLE UP G365
WHF SUMMER 365C

W/C EXECUTIVE ORDER 8543B
W/C MISS WERNING 5014C
CCR WIDE RANGE 9005A
WHF ANDIE 365A

ROBB WARRIOR 91H
D: RF FLIRTIN FOR CERTAIN 3112
RF FLIRTIN FOR CERTAIN 1136J

HART STATE OF WAR 056C
LRX BLACK 89F
PF OKLAHOMA 6625
RF FLIRTIN FOR CERTAIN 963G

115

RF DOUBLE DOWN 590

HOMO BLACK • HOMO POLLED PB
GNR 90N • BPG1519916 • JAN.10.2025

BW	Sep17	205Adj	365Adj
89	895	817	1310

CE	BW	WW	YW	MILK	MCE	MWWT
5.2	3.6	87.4	119.8	18.9	4.8	62.6



Another smooth made, Double Up son out of a heifer with a little chrome on his face. We used Double Up on a few heifers to incorporate his dam, Summer 365C, for the last three years and calved the first daughter this year and she dropped a beautiful udder. Another daughter was on our 2 year old heifer that was Supreme Champion female at Farmfair and the Double Up daughter at side went on to sell for \$51,000 at Friday Night Lights. A very maternal pedigree here in a homo black and polled package out of a great young Magnitude daughter that goes back to the great Cream Soda cow family.

W/C DOUBLE DOWN 5014E
S: WHF/JS/CCS DOUBLE UP G365
WHF SUMMER 365C

W/C EXECUTIVE ORDER 8543B
W/C MISS WERNING 5014C
CCR WIDE RANGE 9005A
WHF ANDIE 365A

RF MAGNITUDE 1178J
D: RF CREAM SODA 362
RF CREAM SODA 911F

RF CAPACITY 742E
RF FLIRT 434B
NGDB STRUCTURE 34D
RF CREAM SODA 763E



116**RF MOONWALK 5162**
HETERO BLACK • HOMO POLLED PB
GNR 162N • BPG1519942 • FEB.8.2025

BW	Sep 17	205Adj	365 Adj
87	835	780	1318

CE	BW	WW	YW	MILK	MCE	MWWT
11.7	-0.5	60.3	86.3	20.9	6.6	51.1



The lone Moonwalk son in the sale and he is a February born, stout, round and wide hipped son with a lot of calving ease bred into him in a moderate framed package. He started with just an 87 lb bw and on paper he is double digit calving ease and a negative bw ranking him in the top 4% of the breed. His dam is a huge bodied Cream Soda cow that raised a show heifer for Dalton Dorran and won him some banners throughout the summer last year. Don't miss this bull on sale day because of his age.



WF Moonwalk 113K
Sire of lot 116

LFE WARZONE 415G
S: WF MOONWALK 113K
WF SHAMELESS 8G

W/C LOADED UP 1119Y
D: KT LOADED UP SODA 414H
HPF CREAM SODA 248D

LFE BEAST MODE 305D
LFE BS CROCUS 11W
NCB COBRA 47Y
MADER SHAMELESS 49E
REMINGTON LOCK N LOAD 54U
AUBREYS BLACK BLAZE III
RGRS SRG TWO STEP 20Z ET
IC CREAM SODA R56

117**RF APPRENTICE 5123**
HOMO BLACK • HOMO POLLED PB
GNR 123N • BPTG1503968 • JAN.15.2025

BW	Sep 17	205Adj	365 Adj
85IVF	940	800	1435

CE	BW	WW	YW	MILK	MCE	MWWT
4.3	5.0	99.9	156.1	18.1	4.3	68.1



RF Apprentice 5123 is out of what might be the favourite cow on the farm and one of the most dominant cows in the breed as of late. He wasn't blessed with the best recip on the farm but has really come on since weaning and started at just 85 lbs. Brooking Angus sold a full sister to 5123 for \$42,500 at Friday Night Lights and maternal sisters have been dominant on the show road for the last two years. Even more important is how exciting the maternal sisters are in two and three year old groups with calves at side and we invite you to come and see them. An exciting homo polled and black genetic package with a ton of potential with an outcross pedigree for many.



RF Scream 974G
Dam of lot 117



RF Scream 3121
Maternal Sister to lot 117

MR SR MIC DROP G1534
S: OMF JOURNEYMAN J24
OMF DEKA D23

RF CAPACITY 742E
D: RF SCREAM 974G
RF SCREAM 215Z

MR SR 71 RIGHT NOW E1538
MISS SR C1534
WELSHS DEW IT RIGHT067T
OMF L.A. WOMAN A25
WFL WESTCOTT 24C
RF FAMOUS 409B
MR HOC BROKER
RF SCREAM 39X

118**RF HOTLINE 5116**HETERO BLACK (BCW) • HOMO POLLED PB
GNR 116N • BPTG1505508 • JAN.14.2025

BW	Sep 17	205Adj	365 Adj
96ET	980	832	1392



CE	BW	WW	YW	MILK	MCE	MWWT
6.7	4.0	93.0	128.8	23.0	6.0	69.5

119**RF BLUELINE 5130**HETERO BLACK (BCW) • HOMO POLLED PB
GNR 130N • BPTG1505514 • JAN.18.2025

BW	Sep 17	205Adj	365 Adj
98ET	855	740	1255



CE	BW	WW	YW	MILK	MCE	MWWT
3.5	3.5	77.8	104.0	23.0	5.2	61.9

Four flush brothers loaded with maternally charged genetics, extra length and docility and backed by an outstanding cow. Their Capacity dam is a front pasture type female with an awesome udder, extra extension and angularity but still has mass and dimension and has a pedigree lined with great females. She hit the donor pen because of her track record of production. Daughters have sold at Friday Night Lights for \$65,000 and \$40,000 and another is retained in our herd. The 3 full sisters and another maternal sister in the replacement pen have us even more excited about this group of bulls too. These are the first set of Dateline calves and we made the move to purchase him to incorporate his great dam, TSZ Keepsake 703A. From the first time we saw her at Herter's we knew that we needed to own something out of her. We saw her again at 11 years of age and still has an awesome udder, is massive made, has great feet and looks exactly like how you want a dam of a herdbull to look. We think that these brothers have a lot to offer with a little different pedigree and both real performance and maternal power. We did this flush thinking they would be homo black but if you look online they all carry the "wild color" gene which makes them hetero black. Also a note of interest, the "wild color gene" only relates to color and has nothing to do with docility and the Dateline sons are all extremely docile.



Deeg Ms Deva 108H
Dam of lots 118-121



Crossroad Dateline 59L
Sire of lots 118-121



RF Ms Deva 392
Maternal sister to lots 118-121

120 RF BOTTOM LINE 5122
HETERO BLACK (BCW) • HOMO POLLED PB
GNR 122N • BPTG1505510 • JAN.15.2025

BW	Sep 17	205Adj	365 Adj
99ET	1020	870	1424



121 RF BLACKLINE 5128
HETERO BLACK (BCW) • HOMO POLLED PB
GNR 128N • BPTG1505511 • JAN.16.2025

BW	Sep 17	205Adj	365 Adj
95ET	1015	868	1265



RFS HEAVY HITTER H45
S: CROSSROAD DATELINE 59L
TSZ KEEPSAKE 703A

RF CAPACITY 742E
D: DEEG MS DEVA 108H
BLACKSAND RANCH DEVA 21X

LCDR IMPACT 134F
BCLR MISS BALDY E704
ACC1 HUSTLER 2N
TSZ ECLIPSE 502Y

WFL WESTCOTT 24C
RF FAMOUS 409B
SAND RANCH HAND
NEVAS L93

122**RF DATELINE 558**HOMO BLACK • HOMO POLLED PB
GNR 58N • BPG1519890 • JAN.3.2025

BW	Sep 17	205Adj	365 Adj
79	860	735	1505

CE	BW	WW	YW	MILK	MCE	MWWT
13.3	0.8	78.5	115.7	20.4	7.7	59.7



An attractive made, big hipped, blaze faced Dateline son that started at just 79 lbs and still pushed the scale down in September at 860 lbs. He ranks in the top 10% of the breed for both bw and ce and is a calving ease option with a different twist to his pedigree. His dam is a Caliber daughter and was a Friday Night Lights purchase and her first calf was a bred that sold to Big Sig Cattle in Manitoba at the Country Classic sale last fall. He's homo polled and homo black and is a soggy made, moderate framed bull.

RFS HEAVY HITTER H45
S: CROSSROAD DATELINE 59L
TSZ KEEPSAKE 703A

RF CALIBER 014G
D: TZ MISS REWARD 2K
LFE BS MISS REWARD 102G

LCDR IMPACT 134F
BCLR MISS BALDY E704
ACC1 HUSTLER 2N
TSZ ECLIPSE 502Y
NGDB STRUCTURE 34D
RF NOT JUST A FLIRT 404B
LFE BEAST MODE 305D
LFE BS MISS REWARD 618A



Crossroad Dateline 59L
Sire of lots 118-132

123**RF DATELINE 585**HETERO BLACK (BCW) • HOMO POLLED PB
GNR 85N • BPG1519914 • JAN.8.2025

BW	Sep 17	205Adj	365 Adj
100	1025	885	1483

CE	BW	WW	YW	MILK	MCE	MWWT
4.6	4.7	92.9	134.1	24.2	4.5	70.7



585 is another Dateline son with extra performance, and pounds in length and muscle. He has the rare combination of some white on his head and solid black otherwise. His dam is a powerful, massive volumed, Supercharged daughter that stems from the Pocahontas cow family. She did an awesome job on 585 pushing down the scale with a September 17 weight of 1025 lbs in a docile, high capacity package with fleshing ability.

RFS HEAVY HITTER H45
S: CROSSROAD DATELINE 59L
TSZ KEEPSAKE 703A

RF SUPERCHARGED 9150G
D: RF POCAHONTAS 240K
IPU 38A MS. REVLOK 146D

LCDR IMPACT 134F
BCLR MISS BALDY E704
ACC1 HUSTLER 2N
TSZ ECLIPSE 502Y
RF CAPACITY 742E
RF CERTAINLY FLIRTIN 202Z
OUTLAW SODA POP 14B
IPU 225X MS. HORIZON 38A

124**RF DATELINE 522**HETERO BLACK (BCW) • HOMO POLLED PB
GNR 522M • BPG1505565 • DEC.25.2024

BW	Sep 17	205Adj	365 Adj
89	895	767	1260

CE	BW	WW	YW	MILK	MCE	MWWT
7.8	3.2	85.7	119.4	21.4	4.8	64.3



Another blaze faced, docile, stout made, moderate framed Dateline son with no extra white and a full sib in blood to the 546 bull that follows him. We hoped we could use Dateline to incorporate his dam, 703A, and add a little calving ease and an outcross pedigree to our program. He did that, and 522 started at just 89 lbs and came early out of a powerful second calver that is one of our favourites in the 3 year old group. The Shakedown daughters are great uddered, hard working females and we thought the mating to Dateline would keep that consistency going.



RF Certainly Flirtin 256K
Dam of lot 124 &
full sister to the dam of lot 125

RFS HEAVY HITTER H45
S: CROSSROAD DATELINE 59L
TSZ KEEPSAKE 703A

RF SHAKEDOWN 074H
D: RF CERTAINLY FLIRTIN 256K
RF CERTAINLY FLIRTIN 962G

LCDR IMPACT 134F
BCLR MISS BALDY E704
ACC1 HUSTLER 2N
TSZ ECLIPSE 502Y
NGDB STRUCTURE 34D
IPU MS. COWBOY CUT 135D
RF CAPACITY 742E
RF CERTAINLY FLIRTIN 202Z

125**RF DATELINE 546**HETERO BLACK • HOMO POLLED PB
GNR 46N • BPG1508389 • JAN.2.2025

BW	Sep 17	205Adj	365 Adj
96	960	815	1397

CE	BW	WW	YW	MILK	MCE	MWWT
5.7	4.3	92.2	130.6	20.1	3.7	66.2



A full brother in blood to the 522 bull and a solid black option with a little more stretch in a little heavier package. The dam of 546, 245K, is a flush mate sister to 256K with a beautiful, square, level udder and is a big bodied female with lots of extension like the cow family they both stem from. 546 pushed down the scale at 960 lbs mid September and should add some length and stretch to a calf crop without sacrificing sog-giness and body.

RFS HEAVY HITTER H45
S: CROSSROAD DATELINE 59L
TSZ KEEPSAKE 703A

RF SHAKEDOWN 074H
D: RF CERTAINLY FLIRTIN 245K
RF CERTAINLY FLIRTIN 962G

LCDR IMPACT 134F
BCLR MISS BALDY E704
ACC1 HUSTLER 2N
TSZ ECLIPSE 502Y
NGDB STRUCTURE 34D
IPU MS. COWBOY CUT 135D
RF CAPACITY 742E
RF CERTAINLY FLIRTIN 202Z

126**RF FIRST LINE 524**HETERO BLACK (BCW) • HOMO POLLED PB
GNR 524M • BPG1505567 • DEC.25.2024

BW	Sep 17	205Adj	365 Adj
88	995	846	1393

CE	BW	WW	YW	MILK	MCE	MWWT
9.1	3.4	91.5	132.6	24.0	6.1	69.8



RF First Line 524 is a massive middled, stout and deep hipped, beef bull with loads of easy doing fleshing ability. His dam is a big bodied, great uddered, Dynasty daughter that stems from the Flirt cow family that is so prominent and influential in our herd and was a Friday Night Lights Purchase. He started at just 88 lbs and missed the 1000 pound mark by just 5 lbs the middle of September. If you are looking for a bull to add fleshing ability and pounds to a calf crop checkout First Line 524.

RFS HEAVY HITTER H45
S: CROSSROAD DATELINE 59L
TSZ KEEPSAKE 703A

SVS DYNASTY 915G
D: BLI/RNBW FLIRT 78K
RF/RUST FLIRT 827F

LCDR IMPACT 134F
BCLR MISS BALDY E704
ACC1 HUSTLER 2N
TSZ ECLIPSE 502Y
RF CAPACITY 742E
WFL RED SAGE 506C
TJSC BOONE PICKENS 46C
RF NOT JUST A FLIRT 404B



RF/Rust Flirt 827F
Maternal Granddam of lot 126

127**RF BIG LOOK 540**HOMO BLACK • HOMO POLLED PB
GNR 540M • BPRS1508384 • DEC.30.2024

BW	Sep 17	205Adj	365 Adj
94	985	826	1432

CE	BW	WW	YW	MILK	MCE	MWWT
7.5	3.3	89.7	130.7	20.4	5.6	65.3



RF Big Look 540 is a homo black Dateline son with a little extra growth, performance and style. His dam is a great uddered Caliber daughter. RF Caliber was the most used black bull in the Simmental breed in Canada last year for registrations. The Caliber sons have made great bulls that will have an influence on the breed in the future and now that we are getting more daughters in production we really believe they will be his legacy. Check out his performance numbers.

RFS HEAVY HITTER H45
S: CROSSROAD DATELINE 59L
TSZ KEEPSAKE 703A

RF CALIBER 014G
D: RF ON A MISSION 238K
RF ON A MISSION 462B

LCDR IMPACT 134F
BCLR MISS BALDY E704
ACC1 HUSTLER 2N
TSZ ECLIPSE 502Y
NGDB STRUCTURE 34D
RF NOT JUST A FLIRT 404B
RF DOUBLE UP 37W
RF ON A MISSION 12U



RF On A Mission 462B
Maternal Granddam of lot 127

128**RF DEADLINE 553**HETERO BLACK • HOMO POLLED PB
GNR 53N • BPG1508395 • JAN.3.2025

BW	Sep 17	205Adj	365 Adj
104	1115	921	1511

CE	BW	WW	YW	MILK	MCE	MWWT
4.2	4.8	95.9	137.3	23.9	4.1	71.9



RFS HEAVY HITTER H45
S: CROSSROAD DATELINE 59L
 TSZ KEEPSAKE 703A

SVS BETTS 808F
D: RF CHEYENNE 1170J
 LRX CHEYENNE 14U

LCDR IMPACT 134F
 BCLR MISS BALDY E704
 ACC1 HUSTLER 2N
 TSZ ECLIPSE 502Y
 BGS/BM CAPTAIN SCREAM 63D
 WFL RED SAGE 506C
 TNT TOP GUN R244
 LRX ASHES 102P



RF Cheyenne 1170J
 Dam of lot 128

RF Deadline 553 is the standout performance Dateline son in the offering and blew the doors off his contemporary group when he posted an actual mid September weight of 1115 lbs and didn't slow up either with a 1511 lb adj yw! His dam is a superb ud-dered, big hiped, high volume red cow that has been a production powerhouse. 553 is her third calf and her first son sold to Ference Land & Cattle and her second calf was a daughter that sold to Silver Ridge Livestock at Friday Night Lights. He's got extra length, thickness and dimension in a pounds heavy package.

129**RF DATELINE 532**HETERO BLACK • HOMO POLLED PB
GNR 532M • BPG1508374 • DEC.28.2024

BW	Sep 17	205Adj	365 Adj
95	840	708	1276

CE	BW	WW	YW	MILK	MCE	MWWT
7.0	3.2	74.8	107.3	16.7	4.6	54.1



RFS HEAVY HITTER H45
S: CROSSROAD DATELINE 59L
 TSZ KEEPSAKE 703A

SVS BETTS 808F
D: RF CERTAINLY FLIRTIN 286K
 RF CERTAINLY FLIRTIN 202Z

LCDR IMPACT 134F
 BCLR MISS BALDY E704
 ACC1 HUSTLER 2N
 TSZ ECLIPSE 502Y
 BGS/BM CAPTAIN SCREAM 63D
 WFL RED SAGE 506C
 WHEATLAND STOUT 930W
 RF FLIRTIN FOR CERTIN 37U



RF Certainly Flirtin 250K
 Full sister to the dam of lot 129

Another Dateline out of a Betts daughter with a blaze face and no extra white underneath. 532 is a smooth made bull with extra style and a pedigree lined with great cows. His dam is a direct 202Z daughter and is also a full sister to RF Certainly Flirtin 250K that sold at Friday Night Lights for \$82,500. With a pedigree full of great donors like 202Z, Sage 506C, Scream 215Z, Keepsake 703A and Flirtin For Certain 37U you'll want to keep all the daughters and hopefully they come with just the right amount of chrome like him.

130**RF REDLINE 548**

HOMO POLLED PB

GNR 48N • PG1508391 • JAN.2.2025

BW Sep 17 205Adj 365 Adj

97 1080 911 1607

CE BW WW YW MILK MCE MWWT

6.5 2.0 85.4 133.9 25.9 1.3 68.6



RFS HEAVY HITTER H45
S: CROSSROAD DATELINE 59L
 TSZ KEEPSAKE 703A

R PLUS YUMA 9087G
D: RF FLIRT 246K
 MADER FLIRT 50F

LCDR IMPACT 134F
 BCLR MISS BALDY E704
 ACC1 HUSTLER 2N
 TSZ ECLIPSE 502Y
 R PLUS 5015C
 MISS R PLUS 3007A
 WFL WESTCOTT 24C
 RF CERTAINLY FLIRTIN 525C



Mader Flirt 50F
 Maternal Granddam of lot 130



RF Certainly Flirtin 525C
 Maternal Great granddam of lot 130

When we bred some hetero black cows to Dateline the intention wasn't to get red calves but when they look like Redline 548 and have a bit of an outcross pedigree for the red side of the world, it's not a bad thing! Not only that, but his performance numbers make him even more special when he was nearing the 1100 lb mark by mid September and continued on to post a 1607 lb adjyw in a long and stout package. His dam is nice uddered, strong footed Yuma daughter that had a good halfblood son in last years bull sale that sold to Mcleod Cattle Co. If you watch epd's, you can't get a much more balanced set of numbers sitting in the top 15% for yw, top 25% for bw and top 30% for ww.

131**RF RED DATELINE 547**

HETERO POLLED PB

GNR 47N • PG1508390 • JAN.2.2025

BW Sep 17 205Adj 365 Adj

93 880 751 1402

CE BW WW YW MILK MCE MWWT

7.2 3.0 82.1 127.2 21.3 5.3 62.4



RFS HEAVY HITTER H45
S: CROSSROAD DATELINE 59L
 TSZ KEEPSAKE 703A

R PLUS YUMA 9087G
D: RF FAMOUS 2140K
 RF FAMOUS 409B

LCDR IMPACT 134F
 BCLR MISS BALDY E704
 ACC1 HUSTLER 2N
 TSZ ECLIPSE 502Y
 R PLUS 5015C
 MISS R PLUS 3007A
 SVS CAPTAIN MORGAN 11Z
 RF FAMOUS 127Y



RF Famous 409B
 Maternal Granddam of lot 131

547 is another soggy, long, red bull with a masculine, herd bull presence from a young age. His dam had an outstanding halfblood son by Best Answer that sold to Derek and Char Sutter last year and she is a maternal sister to RF Capacity. 547 has loads of testicle and is docile like all of the Dateline sons. His grand dam was a big time producer with 6 sons working in purebred and commercial herds across western Canada including RF Capacity who has definitely left his mark on the breed through his daughters.

132**RF CENTER LINE 5129**HOMO POLLED PB
GNR 129N • BPG1519930 • JAN.17.2025

BW	Sep 17	205Adj	365 Adj
97	870	749	1378

CE	BW	WW	YW	MILK	MCE	MWWT
6.5	3.1	76.0	110.0	21.9	3.8	59.9



Another long bodied, deep red Dateline son with extra extension and smoothness. His dam is a Cheyenne daughter that always produces. She has had 2 sons sell through the bull sale to Scarlett Livestock and Ryan Volk and a daughter was a feature halfblood female in the Country Classic sale to Rusylvia and Shologan. Another docile red bull that will leave you some productive daughters and a great set of steers.



LRX Cheyenne 14U
Maternal Granddam of lot 132

RFS HEAVY HITTER H45
S: CROSSROAD DATELINE 59L
TSZ KEEPSAKE 703A

LCDR IMPACT 134F
BCLR MISS BALDY E704
ACC1 HUSTLER 2N
TSZ ECLIPSE 502Y

WFL WESTCOTT 24C
D: RF/CD CHEYENNE 727E
LRX CHEYENNE 14U

TNT 90 PROOF Z401
WFL SWEET LICIOUS 1044X
TNT TOP GUN R244
LRX ASHES 102P

133**RF REDEFINED 5121**HOMO POLLED PB
GNR 121N • CA-PTG1503966 • 15/1/2025

BW	Sep 17	205Adj	365 Adj
93	1005	856	1446

CE	BW	WW	YW	MILK	MCE	MWWT
2.7	6.4	116.2	169.2	21.6	2.8	79.7



RF Scream 3121
Maternal Sister to lot 133



RF Scream 974G
Dam of lot 133



RF Scream 5117
Maternal Sister to lot 133

SVS TYCOON 841F
S: SVS RANCHER 42H
HLTS SAMMIE

RF CAPACITY 742E
D: RF SCREAM 974G
RF SCREAM 215Z

SVS BROOKS 669D
SVS RED ANNIE 411B
WS BEEF KING W107
BRANT DONT YA LOVE ME
WFL WESTCOTT 24C
RF FAMOUS 409B
MR HOC BROKER
RF SCREAM 39X

A definite feature red bull in our pen this year. RF Redefined 5121 is dark red, has tons of presence and herd bull character and is backed by one of the favourite cows in our herd and she is quickly becoming one of the most proven and productive black donor cows in the breed. In the last two years she has produced the \$100,000 RF Intensity, the \$70,000 RF Intense, the \$50,000 halfblood, RF Adrenaline, as well as over a dozen more sons that are working in top purebred and commercial herds across the country. Her daughters have been Supreme Champion at Farmfair, Champion twice at the Calgary Stampede Western Elite Bred Heifer Invitational show the last two years in a row and most recently a maternal sister to Redefined sold for \$170,000 at Friday Night Lights. He ranks in the top 1% of the breed for ww and yw and was a 1005 lbs in mid September. Adding the great Sammie donor to the mix as the dam of Rancher doesn't hurt either. RF Redefined 5121 is the most exciting red bull that we've ever produced.

134**RF REDSTONE 5154**

HOMO POLLED PB

GNR 154N • PTG1517984 • FEB.5.2025

BW	Sep 17	205Adj	365 Adj
97	980	905	1414

CE	BW	WW	YW	MILK	MCE	MWWT
4.4	4.7	91.0	128.3	17.3	3.8	62.8



RF Redstone 5154 is a bit younger dark red bull with a ton of volume, muscle and presence. His dam is a full sister to RF Supercharged and was a sale feature in the Jenna/Flirt event where 2/3 interest in her sold for \$110,000 to Double Bar D. She is a huge bodied, awesome uddered female that is a direct daughter of the 202Z donor cow that has had such a great influence on our herd. Posting a September weight of 980 lbs is no small feat for a February born calf and he continued on with a 1414 lb adj yw. Lots of cow power in his pedigree with cows like 956G, Sage 506C, Famous 409B, 202Z and 37U. We always think that its all about the cows in a bulls pedigree and when you get that many great cows in a pedigree it locks in the consistency.

SVS TYCOON 841F
S: SVS BRIMSTONE 68J
 WFL RED SAGE 506C

RF CAPACITY 742E
D: RF CERTAINLY FLIRTIN 956G
 RF CERTAINLY FLIRTIN 202Z

SVS BROOKS 669D
 SVS RED ANNIE 411B
 R PLUS RELOAD 2006Z
 WFL RED SAGE 1003Y
 WFL WESTCOTT 24C
 RF FAMOUS 409B
 WHEATLAND STOUT 930W
 RF FLIRTIN FOR CERTIN 37U



RF Certainly Flirtin 956G
 Dam of lot 134

135**RF BLAZIN 567**

PUREBRED ANGUS

GNR 67N • 2429355 • JAN.5.2025

BW	Sep 17	205Adj	365 Adj
93	835	694	1296

CE	BW	WW	YW	MILK	MCE	MWWT
5.0	4.3	62.0	111.0	23.0	5.0	

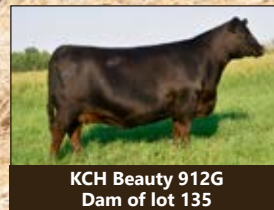


RF Blazin 567 is the lone purebred Lit Up son in our offering this year. He is very typical of the Lit Up sons with a ton of presence, hold his head high, is deep ribbed and awesome haired. He didn't live up to his full potential when it comes to performance numbers because instead of going to grass with the rest of the bull calf pairs he went with his dam to a facility to be flushed all summer until he was weaned. That definitely set him back but you wouldn't know he started that far behind now. His dam is one of our favourite Angus cows and has a big time pedigree being a direct daughter of the legendary Beauty 6R cow. Sons have sold to Rocking Heart, T8 Ranch, Mohlers, and Hagers. We have retained some exciting daughters out of her in our herd and we think that she will have a major influence going forward.

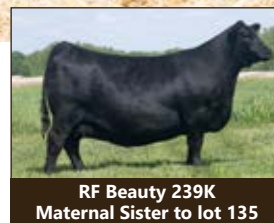
BROOKING EMERALD 9179
S: RF LIT UP 357
 LFE BA JENNIFER 29J

BROOKING BANK NOTE 4040
D: KCH BEAUTY 912G
 TLA BEAUTY 6R

S A V RENOVATION 6822
 BROOKING BEAUTY 6051
 S A V AJAX 8885
 LFE BA JENNIFER 10C
 CONNEALY EARNAN 076E
 E A ROSE 918
 RR 7407 RAINMAKER 2154
 TERRLENE BEAUTY 35F



KCH Beauty 912G
 Dam of lot 135



RF Beauty 239K
 Maternal Sister to lot 135

136**RF LANDMINE 599**

PUREBRED ANGUS

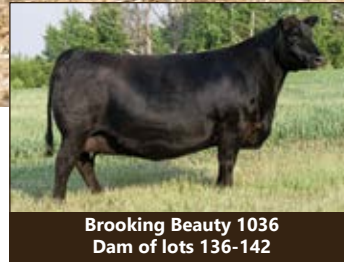
GNR 99N • 2434907 • JAN.11.2025

BW	Sep 17	205Adj	365 Adj
89IVF	940	795	1382

CE	BW	WW	YW	MILK	MCE	MWWT
7.5	1.3	62.0	110.0	26.0	7.0	46.0



RF Landmine 599 has been an exciting bull to watch develop all year. He's always had a cool presence about him and is a stout made, deep bodied Badlands son. He's no slouch in terms of performance either, with an actual Sept 17 weight of 940 lbs. We were excited when we were able to get his dam, 1036, bought with Maxwells and Canadian Donors. She is a direct daughter of the great Brooking Beauty 6051 donor, making her a maternal sister to the breeding giant, Brooking Emerald. She is so similar to her dam with exceptional udder quality, tons of body depth and a great look. The mating to Badlands is exactly what we hoped for. Badlands is backed by what is touted as the most accomplished female in the Ellingson herd and is the dam of numerous high selling sons that are very prominent in the Angus breed. 599 is a combination of some of the great females and sires in the Angus breed both north and south of the border.



Brooking Beauty 1036
Dam of lots 136-142

ELLINGSON RIDER PRIDE 7282
S: ELLINGSON BADLANDS 0285
EA BELLS GIRL 7617

ELLINGSON ROUGHRIDER 4202
EA QUEEN DOLLY 3246
KOU PAL ADVANCE 28
EA BELLS GIRL 2181

S A V AMERICA 8018
D: BROOKING BEAUTY 1036
BROOKING BEAUTY 6051

S A V PRESIDENT 6847
S A V MADAME PRIDE 0075
BROOKING BANK NOTE 4040
SOO LINE BEAUTY 1027

137**RF PANTHER 5210**

PUREBRED ANGUS

GNR 210N • 2449298 • JAN.20.2025

BW	Sep 17	205Adj	365 Adj
93IVF	845	741	1401

CE	BW	WW	YW	MILK	MCE	MWWT
9.0	0.3	59.0	102.0	32.0	13.0	44.0



RF Panther 5210 is a bull that is exciting in terms of look, presence and maternal power. He is deep bodied, proud and masculine fronted and has lots of performance. We can't say enough about how excited we are about the future of his dam and the impact she will have on our Angus and halfblood program. You don't have to look very hard to see how exciting the first couple calf crops by Panther have been. Panther was a \$350,000 high seller in 2022 at SAV and there has been numerous progeny that have been high sellers and show champions. Not going to lie, we were really hoping this mating was going to produce a heifer calf for us to incorporate Panther's great dam into a heifer for our program but our loss is your gain. Keep every heifer from this bull, his daughters should be awesome.

S A V QUARTERBACK 7933
S: S A V PANTHER 1906
S A V BLACKCAP MAY 6644

S A V REGARD 4863
S A V BLACKCAP MAY 3525
COLEMAN CHARLO 0256
S A V BLACKCAP MAY 4136

S A V AMERICA 8018
D: BROOKING BEAUTY 1036
BROOKING BEAUTY 6051

S A V PRESIDENT 6847
S A V MADAME PRIDE 0075
BROOKING BANK NOTE 4040
SOO LINE BEAUTY 1027

138 RF RADVILLE 5209
 PUREBRED ANGUS
 GNR 209N • 2449299 • JAN.19.2025

BW	Sep17	205Adj	365Adj
92IVF	860	751	1389



CE	BW	WW	YW	MILK	MCE	MWWT
7.0	1.8	74.0	120.0	25.0	10.0	63.0

139 RF RADVILLE 5211
 PUREBRED ANGUS
 GNR 211N • 2449297 • JAN.21.2025

BW	Sep 17	205Adj	365 Adj
93IVF	895	787	1293



CE	BW	WW	YW	MILK	MCE	MWWT
9.0	-0.1	56.0	100.0	28.0	6.0	33.0

140**RF RADVILLE 5214**
PUREBRED ANGUS
GNR 214N • 2449296 • JAN.24.2025BW Sep 17 205Adj 365 Adj
101_{ET} 925 823 1476**Brooking Beauty 1036**
Dam of lots 136-142**Brooking Beauty 333**
Paternal Grand dam of lots 138-140

Since weaning we've been trying to figure out which of these trio of full brothers is our favourite and it changes just about every week. All three of these bulls pushed down the scale hard at weaning time and are big bodied, soggy made stout bulls with an awesome look. It doesn't seem to matter how you mate Beauty 1036, she just works. Radville adds the influence of his legendary dam, 333, who is a million dollar producing cow but with a little more calving ease from the top side. Radville is already making his mark with a \$75,000 daughter in his first calf crop and an exciting set of sons. Whether you want to build a group of replacements, a set of steers to top the market, or just want to stack predictable maternal quality, these 3 flush mate brothers are a great place to pick from.

S A V BISMARCK 5682
S: BROOKING RADVILLE 2208
BROOKING BEAUTY 333

S A V AMERICA 8018
D: BROOKING BEAUTY 1036
BROOKING BEAUTY 6051

G A R GRID MAKER
S A V ABIGALE 0451
S A V HARVESTOR 0338
TLA BEAUTY 6R

S A V PRESIDENT 6847
S A V MADAME PRIDE 0075
BROOKING BANK NOTE 4040
SOO LINE BEAUTY 1027

141**RF MAX CD COLUMBIA 5142**

PUREBRED ANGUS

GNR 142N • 2453030 • JAN.27.2025

BW Sep 17 205Adj 365 Adj

82 760 700 1412

CE BW WW YW MILK MCE MWWT

6.0 2.2 68.0 129.0 26.0 6.0 37.0



5142 is the natural calf out of the 1036 donor cow and he is a bit younger bull but is always picked out in the pen this winter. He was another bull that went to a flush facility with his dam instead of to grass with the rest of the bull calves so isn't expressing his full potential in terms of performance numbers but he has turned it on since he got home at weaning. A full brother to him was our heaviest weaning bull in the Angus pen and was a pen favourite, but got hurt before cataloguing time. The Glacier sire group were popular in last years bull sale and we have a couple of daughters to calve this year and they are beautiful young cows that we are excited for their future.

S A V RENOWN 3439
S: COLEMAN GLACIER 041
 COLEMAN DONNA 439

RITO 707 OF IDEAL 3407 7075
 S A V BLACKCAP MAY 4136
 GDAR GAME DAY 449
 COLEMAN DONNA 714

S A V AMERICA 8018
D: BROOKING BEAUTY 1036
 BROOKING BEAUTY 6051

S A V PRESIDENT 6847
 S A V MADAME PRIDE 0075
 BROOKING BANK NOTE 4040
 SOO LINE BEAUTY 1027

142**RF DENSITY 5215**

PUREBRED ANGUS

GNR 215N • 2449295 • JAN.25.2025

BW Sep 17 205Adj 365 Adj

92IVF 760 680 1370

CE BW WW YW MILK MCE MWWT

8.0 2.3 54.0 91.0 23.0 3.0 30.0



5215 is a big middled, smooth made, awesome haired Density son. The maternal power in this pedigree is second to none. Density is a cow maker extraordinaire and we'd be lying if we said we didn't really hope he was going to be a heifer too. 5215 also speaks to how much power and look his dam, 1036, breeds into her calves. When you stack this many great cows on both sides of a pedigree you truly lock in the maternal consistency.

S A V 8180 TRAVELER 004
S: S A V 004 DENSITY 4336
 S A V MAY 7238

SITZ TRAVELER 8180 8
 BOYD FOREVER LADY 8003
 LEACHMAN RIGHT TIME
 S A R PROSPECTOR MAY 9124

S A V AMERICA 8018
D: BROOKING BEAUTY 1036
 BROOKING BEAUTY 6051

S A V PRESIDENT 6847
 S A V MADAME PRIDE 0075
 BROOKING BANK NOTE 4040
 SOO LINE BEAUTY 1027



Brooking Beauty 1036
 Dam of lots 136-142

143**RF RADVILLE 5302**

PUREBRED ANGUS

GNR 302N • 2453022 • FEB.2.2025

BW Sep 17 205Adj 365 Adj

88 955 878 1443

CE BW WW YW MILK MCE MWWT

0.0 4.2 83.0 142.0 27.0 2.0 97.0



5302 is another Radville son with big performance that is soft middled, stout made and has tons of performance with a 955 lb mid September weight and not slowing up a bit to his yearling weight. His dam was a sale feature in the Anchorage winter calving dispersal and was always complimented for her huge rib, level top smooth shoulder and elevated front end. She is a strong udder cow and has raised 3 sons in a row the were top of the pen at weaning and is a cow that is so maternal and complete in her build.



Anchorage Tibbie 0061
Dam of lot 143

S A V BISMARCK 5682
S: BROOKING RADVILLE 2208
BROOKING BEAUTY 333

PEAK DOT STRONG ARM 170F
D: ANCHORAGE TIBBIE 0061
ANCHORAGE TIBBIE 8600

G A R GRID MAKER
S A V ABIGALE 0451
S A V HARVESTOR 0338
TLA BEAUTY 6R

PEAK DOT YOU GOT IT
PEAK DOT ANNIE K 37A
BROOKING BLACK INK 4019
HF TIBBIE 21D

144**RF SPARROW 5303**

PUREBRED ANGUS

GNR 303N • 2453024 • JAN.16.2025

BW Sep 17 205Adj 365 Adj

92 905 855 1222

CE BW WW YW MILK MCE MWWT

4.0 3.4 61.0 113.0 20.0 6.0 56.0



5303 is a performance bull out of a heifer that is smooth made, long fronted and great haired. His dam is a beautiful uddered Glacier daughter that came out of the KT program in BC. Her dam was a high powered Harvester donor straight from the SAV program that had a feature son in their bull sale two years ago. Sparrow adds a bit different twist to the pedigree adding the great U2 Shameless bull. Truly a pedigree lined with generations of great donors in the Angus breed from both sides of the border.

U2 SHAMELESS 145G
S: COVEY HILL SPARROW 10J
THE MAC BLACKBIRD 28G

COLEMAN GLACIER 041
D: KT BLACKCAP MAY 3379
S A V BLACKCAP MAY 6454

COLEMAN BRAVO 6313
U-2 ROSEBUD 157C
S A V RAINFALL 6846
TMA 5027 BLACKBIRD 3A

S A V RENOWN 3439
COLEMANN DONNA 439
S A V HARVESTOR 0338
S A V BLACKCAP MAY 1782



Rancier Farms implements a comprehensive herd health program developed with Lacombe Veterinary Centre. The cows and bulls are all SelectVac GOLD+ verified. The bulls are fully vaccinated with a modified live respiratory and 8way clostridial vaccines and receive an internal/external parasite control program. A breeding soundness evaluation, including semen testing, is performed on all the bulls.
 Skylar Bieleny, DVM"



It is such a pleasure to be working with the Rancier family who are so dedicated to the cattle industry. The Rancier bull pen is a must see; the bulls are always so impressive, and a tour of the cowherd will have you quickly seeing why it is one of the best in Canada.

The bull feeding program is built to maximize forage utilization and gut health; they are developed on grass with their moms on a strict mineral program. All the forages are sampled and analyzed to ensure quality forages are used. Once the calves are weaned, they are slowly moved onto a balanced TMR.

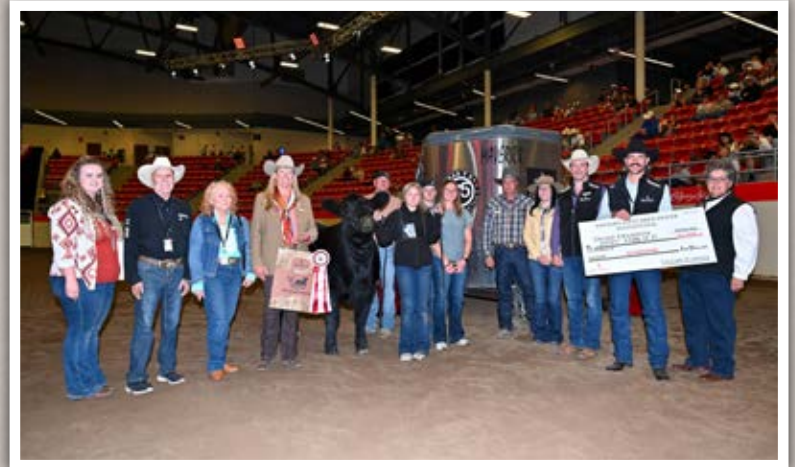
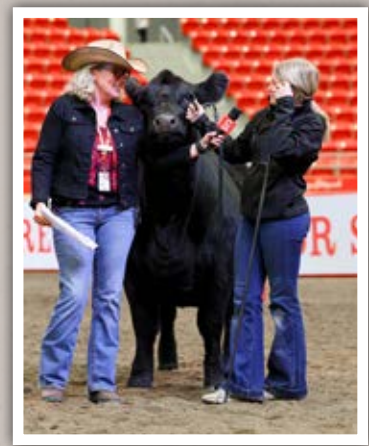
The bulls are challenged with a forage-based TMR to help them develop and express their genetic potential. Matching suitable protein sources with proper starch is key to promoting lean muscle growth. Organic minerals are used to ensure proper immune function and overall health. If you have any questions about the nutrition program, please feel free to reach out. Buy with confidence knowing the bulls have been developed on a balanced nutrition program. Best of luck on sale day!



Tom McNeely (780) 679-7220
 Co-Founder tomj.mcneely@bullseyefeeds.ca

© More Than Just Feed





Rancier Farms
Box 569
Killam AB T0B 2L0

***Thank you to all our buyers and bidders.
We enjoy meeting our new buyers, and a special thanks to our repeat buyers.
Thank you for your continued confidence in our programs.
We all look forward to seeing you and visiting with you at the sale.***

6R Farms
Barber Land and Cattle Ltd.
Blair Anderson
Bos Taurus Livestock
Brad Paulgaard
Bradley Russnak
Bristol View Farms
Cannan Farms Ltd.
Chris & Kristie Bauer
Circle G Simmentals
Clayton and Jim Davies
Cody Heck
Crooked Creek Farms
Dallas Bristow
Derek Sutter
Double Bar D Ranch
Double F
Double KC Ranch
Double RN Ranching
Dwayne & Becky Lastiwka
Dylan Laurenceson
Eddleston Farming
Ferme Roger Fortier Et Fils
Garth and Ashton Dinwoodie
Gary Gontiwik
Glenholm Farms
Grant Jones
H Bar M Land & Cattle
Hays Land & Cattle Ltd.
JK Bar Cattle/Westman Farms
Joel & Gill Pochipinski

Johnson Ranching
Karvonen Land & Cattle Inc.
Kathol Simmental Ranch
KJ Larre Ranching Ltd.
Kuntz Simmental Farm
Kurek Farms
Lake Bend Land & Cattle Co.
Lakeview Colony
Larry Storbakken
Lazy HE Ranch
Leedale Colony
Leonard Babcock
Leslie Pashulka
Lidberg Farms Ltd.
Little Willow Creek
Lougheed Farming
Mark & Deanna Biggs
MAVV Farms Inc.
Maxwell Simmentals and Clifford Land & Cattle
Mayfield Ranching
McCutcheon Farms Ltd.
McLeod Cattle Co.
Mike & Deanne Paterson
Mohler Farms (1998) Ltd.
Packet Bros/Les Schick
Paul Murray Farms
Posta El Cuatro
Prairie Skye Farms
Rafter 4-T Farms Ltd.
Raley Colony Ltd.
Randy Geisler

Rentz Livestock
Ribstone Ranch
Riverside Farms
Rocking Heart Range
Ron Symes
Scherger Ranching
Schiller Farms
Schipper Farms
Scott Colony
Siebold Land & Cattle
Sjogren Farms Inc.
Skurdalen Farms
Small Ranch
Stammers Ranch
Stefanishion Farms
Stroh Farm
T8 Ranch Ltd.
Three Hills Colony
Triangle 33 Simmentals
Triple K Simmentals
Two Mile Simmentals
Wayne Trenerry
Westman Farms
Westman Farms & Double RN Ranching
Wilson Colony
Wooden Spoke Land and Cattle
Woodhall Farms and BVC Farms
Woywitka Farms
Zevola Farms Ltd.
ZWT Ranch

MAXWELL SIMMENTALS - RANCIER FARMS

31st Annual BULL SALE

FRIDAY • FEBRUARY 27 2026 • 1:00 PM

MAXWELL SALES FACILITY - VIKING ALBERTA
